



# TIP60 (phospho Ser86) rabbit pAb

Cat No.:ES4495

For research use only

## Overview

Product Name	TIP60 (phospho Ser86) rabbit pAb
Host species	Rabbit
Applications	WB;ELISA;IHC
Species Cross-Reactivity	Human;Mouse
Recommended dilutions	WB 1:500-2000;IHC-p 1:50-300; ELISA 2000-20000
Immunogen	The antiserum was produced against synthesized peptide derived from human TIP60 around the phosphorylation site of Ser86. AA range:52-101
Specificity	Phospho-TIP60 (S86) Polyclonal Antibody detects endogenous levels of TIP60 protein only when phosphorylated at S86.
Formulation	Liquid in PBS containing 50% glycerol, 0.5% BSA and 0.02% sodium azide.
Storage	Store at -20°C. Avoid repeated freeze-thaw cycles.
Protein Name	Histone acetyltransferase KAT5
Gene Name	KAT5
Cellular localization	Nucleus . Chromosome . Cytoplasm . Chromosome, centromere, kinetochore . Cytoplasm, cytoskeleton, spindle pole . Nucleus, nucleolus . Cytoplasm, perinuclear region . Upon stimulation with EDN1, it is exported from the nucleus to the perinuclear region and UV irradiation induces translocation into punctuate subnuclear structures named nuclear bodies (PubMed:11262386). Transiently localizes to kinetochores in early mitosis (PubMed:26829474). Localizes to spindle poles when chromosomes align during metaphase (PubMed:34608293). Localizes in the cytoplasm and nucleus of round spermatids (By similarity). .
Purification	The antibody was affinity-purified from rabbit antiserum by affinity-chromatography using epitope-specific immunogen.
Clonality	Polyclonal

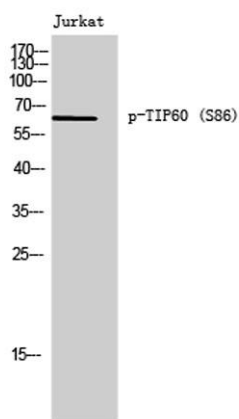




<b>Concentration</b>	1 mg/ml
<b>Observed band</b>	65kD
<b>Human Gene ID</b>	10524
<b>Human Swiss-Prot Number</b>	Q92993
<b>Alternative Names</b>	KAT5; HTATIP; TIP60; Histone acetyltransferase KAT5; 60 kDa Tat-interactive protein; Tip60; Histone acetyltransferase HTATIP; HIV-1 Tat interactive protein; Lysine acetyltransferase 5; cPLA(2)-interacting protein

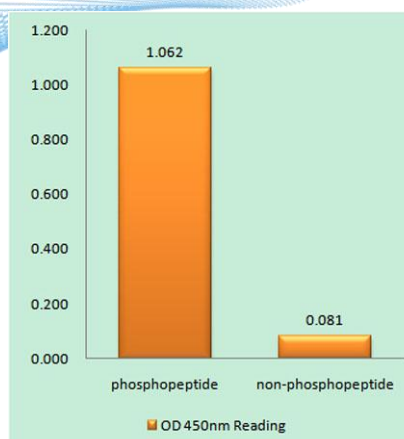
#### **Background**

The protein encoded by this gene belongs to the MYST family of histone acetyl transferases (HATs) and was originally isolated as an HIV-1 TAT-interactive protein. HATs play important roles in regulating chromatin remodeling, transcription and other nuclear processes by acetylating histone and nonhistone proteins. This protein is a histone acetylase that has a role in DNA repair and apoptosis and is thought to play an important role in signal transduction. Alternative splicing of this gene results in multiple transcript variants. [provided by RefSeq, Jul 2008],

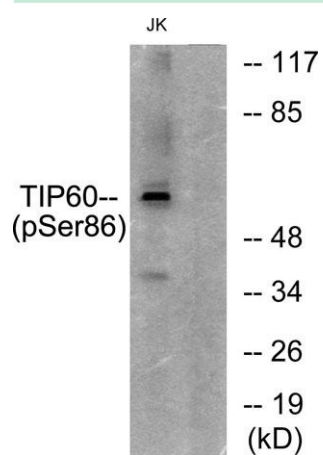


Western Blot analysis of Jurkat cells using Phospho-TIP60 (S86) Polyclonal Antibody

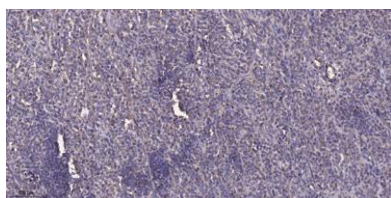




Enzyme-Linked Immunosorbent Assay (Phospho-ELISA) for Immunogen Phosphopeptide (Phospho-left) and Non-Phosphopeptide (Phospho-right), using TIP60 (Phospho-Ser86) Antibody



Western blot analysis of lysates from Jurkat cells, using TIP60 (Phospho-Ser86) Antibody. The lane on the right is blocked with the phospho peptide.



Immunohistochemical analysis of paraffin-embedded human Colon cancer. 1, Antibody was diluted at 1:200(4° overnight). 2, Tris-EDTA,pH9.0 was used for antigen retrieval. 3,Secondary antibody was diluted at 1:200(room temperature, 45min).

