



NHE-6 rabbit pAb

Cat No.:ES4482

For research use only

Overview

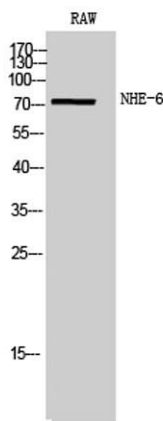
Product Name	NHE-6 rabbit pAb
Host species	Rabbit
Applications	WB;ELISA
Species Cross-Reactivity	Human;Mouse
Recommended dilutions	Western Blot: 1/500 - 1/2000. ELISA: 1/40000. Not yet tested in other applications.
Immunogen	The antiserum was produced against synthesized peptide derived from human SLC9A6. AA range:551-600
Specificity	NHE-6 Polyclonal Antibody detects endogenous levels of NHE-6 protein.
Formulation	Liquid in PBS containing 50% glycerol, 0.5% BSA and 0.02% sodium azide.
Storage	Store at -20°C. Avoid repeated freeze-thaw cycles.
Protein Name	Sodium/hydrogen exchanger 6
Gene Name	SLC9A6
Cellular localization	Endosome membrane ; Multi-pass membrane protein . Is present in the recycling compartments including early and recycling endosomes, and only appears transiently on the plasma membrane.; [Isoform 2]: Recycling endosome membrane ; Multi-pass membrane protei
Purification	The antibody was affinity-purified from rabbit antiserum by affinity-chromatography using epitope-specific immunogen.
Clonality	Polyclonal
Concentration	1 mg/ml
Observed band	75kD
Human Gene ID	10479
Human Swiss-Prot Number	Q92581
Alternative Names	SLC9A6; KIAA0267; NHE6; Sodium/hydrogen exchanger 6; Na(+)/H(+) exchanger 6; NHE-6; Solute carrier family 9 member 6



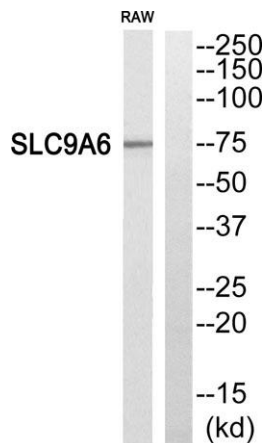


Background

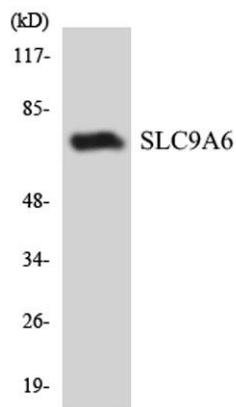
This gene encodes a sodium-hydrogen exchanger that is a member of the solute carrier family 9. The encoded protein localizes to early and recycling endosomes and may be involved in regulating endosomal pH and volume. Defects in this gene are associated with X-linked syndromic mental retardation, Christianson type. Alternate splicing results in multiple transcript variants.[provided by RefSeq, Apr 2010],



Western Blot analysis of RAW cells using NHE-6 Polyclonal Antibody



Western blot analysis of SLC9A6 Antibody. The lane on the right is blocked with the SLC9A6 peptide.



Western blot analysis of the lysates from COLO205 cells using SLC9A6 antibody.





ELK Biotechnology



+86-27-59760950

ELKbio@ELKbiotech.com

www.elkbiotech.com

23-2, No.388 Gaoxin 2nd Road,Wuhan East Lake Hi-tech Development Zone, Hubei , P.R.C