



RNF15 rabbit pAb

Cat No.:ES4481

For research use only

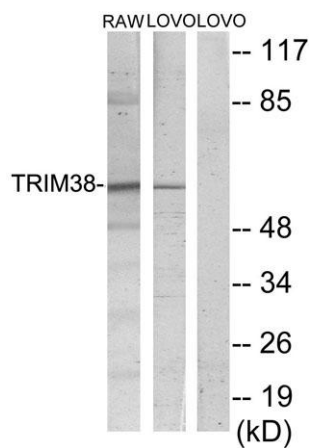
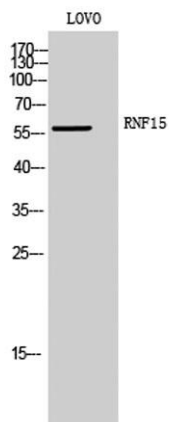
Overview

Product Name	RNF15 rabbit pAb
Host species	Rabbit
Applications	WB;IHC
Species Cross-Reactivity	Human;Mouse
Recommended dilutions	WB 1:500-2000;IHC-p 1:50-300
Immunogen	The antiserum was produced against synthesized peptide derived from human TRIM38. AA range:161-210
Specificity	RNF15 Polyclonal Antibody detects endogenous levels of RNF15 protein.
Formulation	Liquid in PBS containing 50% glycerol, 0.5% BSA and 0.02% sodium azide.
Storage	Store at -20°C. Avoid repeated freeze-thaw cycles.
Protein Name	Tripartite motif-containing protein 38
Gene Name	TRIM38
Cellular localization	Cytoplasm .
Purification	The antibody was affinity-purified from rabbit antiserum by affinity-chromatography using epitope-specific immunogen.
Clonality	Polyclonal
Concentration	1 mg/ml
Observed band	58kD
Human Gene ID	10475
Human Swiss-Prot Number	O00635
Alternative Names	TRIM38; RNF15; RORET; Tripartite motif-containing protein 38; RING finger protein 15; Zinc finger protein RoRet
Background	This gene encodes a member of the tripartite motif (TRIM) family. The encoded protein contains a RING-type zinc finger, B box-type zinc finger and SPRY domain. The function of this protein has not been identified. A pseudogene of this gene is located on the long arm of chromosome 4.

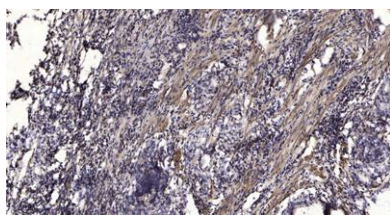


[provided by RefSeq, Jul 2012],

Western Blot analysis of LOVO cells using RNF15
Polyclonal Antibody



Western blot analysis of lysates from LOVO and RAW264.7
cells, using TRIM38 Antibody. The lane on the right is
blocked with the synthesized peptide.



Immunohistochemical analysis of paraffin-embedded
human Gastric adenocarcinoma. 1, Antibody was diluted
at 1:200(4° overnight). 2, Tris-EDTA,pH9.0 was used for
antigen retrieval. 3,Secondary antibody was diluted at
1:200(room temperature, 45min).

