



# Cdx2 rabbit pAb

Cat No.:ES4473

For research use only

## Overview

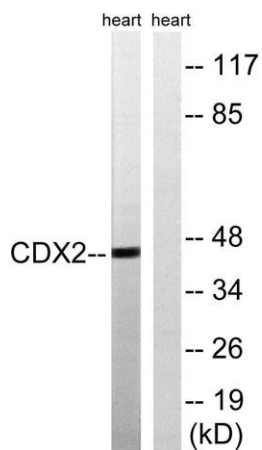
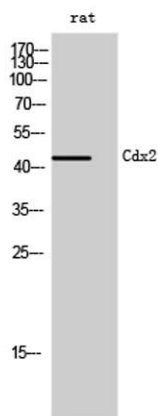
<b>Product Name</b>	Cdx2 rabbit pAb
<b>Host species</b>	Rabbit
<b>Applications</b>	WB;ELISA
<b>Species Cross-Reactivity</b>	Human;Mouse;Rat
<b>Recommended dilutions</b>	Western Blot: 1/500 - 1/2000. ELISA: 1/5000. Not yet tested in other applications.
<b>Immunogen</b>	The antiserum was produced against synthesized peptide derived from human CDX2. AA range:249-298
<b>Specificity</b>	Cdx2 Polyclonal Antibody detects endogenous levels of Cdx2 protein.
<b>Formulation</b>	Liquid in PBS containing 50% glycerol, 0.5% BSA and 0.02% sodium azide.
<b>Storage</b>	Store at -20°C. Avoid repeated freeze-thaw cycles.
<b>Protein Name</b>	Homeobox protein CDX-2
<b>Gene Name</b>	CDX2
<b>Cellular localization</b>	Nucleus .
<b>Purification</b>	The antibody was affinity-purified from rabbit antiserum by affinity-chromatography using epitope-specific immunogen.
<b>Clonality</b>	Polyclonal
<b>Concentration</b>	1 mg/ml
<b>Observed band</b>	45kD
<b>Human Gene ID</b>	1045
<b>Human Swiss-Prot Number</b>	Q99626
<b>Alternative Names</b>	CDX2; CDX3; Homeobox protein CDX-2; CDX-3; Caudal-type homeobox protein 2
<b>Background</b>	This gene is a member of the caudal-related homeobox transcription factor gene family. The encoded protein is a major regulator of intestine-specific genes involved in cell growth and differentiation. This protein also plays a role in early embryonic development of the intestinal tract.





Aberrant expression of this gene is associated with intestinal inflammation and tumorigenesis. [provided by RefSeq, Jan 2012],

Western Blot analysis of rat cells using Cdx2 Polyclonal Antibody cells nucleus extracted by Minute TM Cytoplasmic and Nuclear Fractionation kit (SC-003, Inventbiotech, MN, USA).



Western blot analysis of lysates from rat heart, using CDX2 Antibody. The lane on the right is blocked with the synthesized peptide.

