



# Cdc42EP2 rabbit pAb

Cat No.:ES4471

For research use only

## Overview

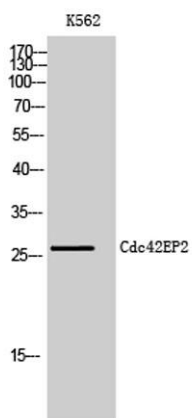
<b>Product Name</b>	Cdc42EP2 rabbit pAb
<b>Host species</b>	Rabbit
<b>Applications</b>	WB;IHC;IF;ELISA
<b>Species Cross-Reactivity</b>	Human;Mouse;Rat
<b>Recommended dilutions</b>	Western Blot: 1/500 - 1/2000. Immunohistochemistry: 1/100 - 1/300. ELISA: 1/40000. Not yet tested in other applications.
<b>Immunogen</b>	The antiserum was produced against synthesized peptide derived from human BORG1. AA range:10-59
<b>Specificity</b>	Cdc42EP2 Polyclonal Antibody detects endogenous levels of Cdc42EP2 protein.
<b>Formulation</b>	Liquid in PBS containing 50% glycerol, 0.5% BSA and 0.02% sodium azide.
<b>Storage</b>	Store at -20°C. Avoid repeated freeze-thaw cycles.
<b>Protein Name</b>	Cdc42 effector protein 2
<b>Gene Name</b>	CDC42EP2
<b>Cellular localization</b>	Endomembrane system ; Peripheral membrane protein . Cytoplasm, cytoskeleton .
<b>Purification</b>	The antibody was affinity-purified from rabbit antiserum by affinity-chromatography using epitope-specific immunogen.
<b>Clonality</b>	Polyclonal
<b>Concentration</b>	1 mg/ml
<b>Observed band</b>	28kD
<b>Human Gene ID</b>	10435
<b>Human Swiss-Prot Number</b>	O14613
<b>Alternative Names</b>	CDC42EP2; BORG1; CEP2; Cdc42 effector protein 2; Binder of Rho GTPases 1
<b>Background</b>	CDC42, a small Rho GTPase, regulates the formation of F-actin-containing structures through its interaction with the downstream effector proteins. The protein encoded by this gene is a member of



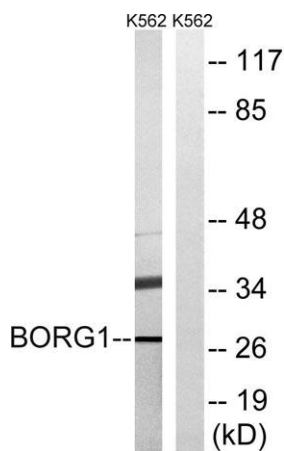


the Borg family of CDC42 effector proteins. Borg family proteins contain a CRIB (Cdc42/Rac interactive-binding) domain. They bind to, and negatively regulate the function of CDC42. Coexpression of this protein with CDC42 suggested a role of this protein in actin filament assembly and cell shape control. [provided by RefSeq, Aug 2011],

Western Blot analysis of K562 cells using Cdc42EP2 Polyclonal Antibody



Western blot analysis of lysates from K562 cells, using BORG1 Antibody. The lane on the right is blocked with the synthesized peptide.



Immunohistochemical analysis of paraffin-embedded human Squamous cell carcinoma of lung. 1, Antibody was diluted at 1:200(4° overnight). 2, Tris-EDTA,pH9.0 was used for antigen retrieval. 3,Secondary antibody was diluted at 1:200(room temperature, 45min).

