



Hec1 rabbit pAb

Cat No.:ES4468

For research use only

Overview

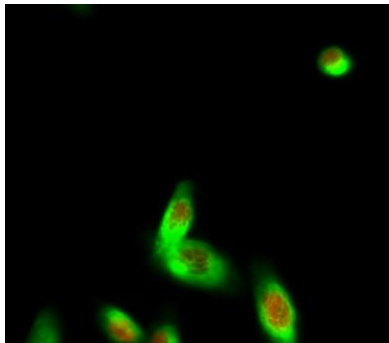
Product Name	Hec1 rabbit pAb
Host species	Rabbit
Applications	WB;IF;ELISA
Species Cross-Reactivity	Human;Mouse
Recommended dilutions	Western Blot: 1/500 - 1/2000. Immunofluorescence: 1/200 - 1/1000. ELISA: 1/20000. Not yet tested in other applications.
Immunogen	The antiserum was produced against synthesized peptide derived from human KNTC2. AA range:351-400
Specificity	Hec1 Polyclonal Antibody detects endogenous levels of Hec1 protein.
Formulation	Liquid in PBS containing 50% glycerol, 0.5% BSA and 0.02% sodium azide.
Storage	Store at -20°C. Avoid repeated freeze-thaw cycles.
Protein Name	Kinetochores protein NDC80 homolog
Gene Name	NDC80
Cellular localization	Nucleus . Chromosome, centromere, kinetochores . Localizes to kinetochores from late prophase to anaphase (PubMed:14699129). Localizes specifically to the outer plate of the kinetochores (PubMed:14699129). .
Purification	The antibody was affinity-purified from rabbit antiserum by affinity-chromatography using epitope-specific immunogen.
Clonality	Polyclonal
Concentration	1 mg/ml
Observed band	73kD
Human Gene ID	10403
Human Swiss-Prot Number	O14777
Alternative Names	NDC80; HEC; HEC1; KNTC2; Kinetochores protein NDC80 homolog; Highly expressed in cancer protein; Kinetochores protein Hec1; HsHec1;



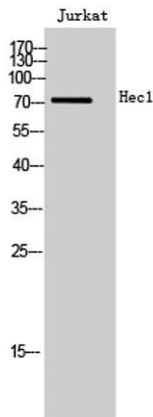


Background

Kinetochores-associated protein 2;
Retinoblastoma-associated protein HEC
This gene encodes a component of the NDC80 kinetochores complex. The encoded protein consists of an N-terminal microtubule binding domain and a C-terminal coiled-coiled domain that interacts with other components of the complex. This protein functions to organize and stabilize microtubule-kinetochores interactions and is required for proper chromosome segregation. [provided by RefSeq, Oct 2011],



Immunofluorescence analysis of HeLa cell. 1, Hec1 Polyclonal Antibody (red) was diluted at 1:200 (4° overnight). Kif 7 Monoclonal Antibody (3F8) (green) was diluted at 1:200 (4° overnight). 2, Goat Anti Rabbit Alexa Fluor 594 Catalog: RS3611 was diluted at 1:100



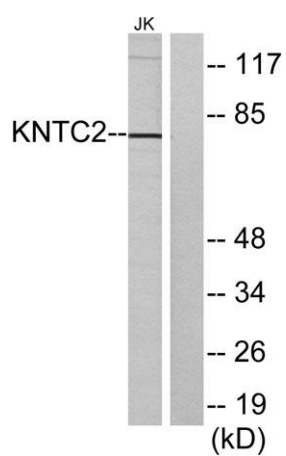
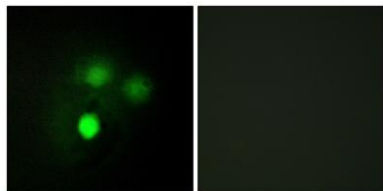
Western Blot analysis of Jurkat cells using Hec1 Polyclonal Antibody cells nucleus extracted by Minute TM Cytoplasmic and Nuclear Fractionation kit (SC-003, Invent Biotech, MN, USA).





ELK Biotechnology

Immunofluorescence analysis of HUVEC cells, using KNTC2 Antibody. The picture on the right is blocked with the synthesized peptide.



Western blot analysis of lysates from Jurkat cells, using KNTC2 Antibody. The lane on the right is blocked with the synthesized peptide.



+86-27-59760950

ELKbio@ELKbiotech.com

www.elkbiotech.com

23-2, No.388 Gaoxin 2nd Road, Wuhan East Lake Hi-tech Development Zone, Hubei, P.R.C