



TSHZ1 rabbit pAb

Cat No.:ES4437

For research use only

Overview

Product Name	TSHZ1 rabbit pAb
Host species	Rabbit
Applications	IHC;IF;ELISA
Species Cross-Reactivity	Human;Mouse
Recommended dilutions	Immunohistochemistry: 1/100 - 1/300. ELISA: 1/20000. Not yet tested in other applications.
Immunogen	The antiserum was produced against synthesized peptide derived from human TSH1. AA range:851-900
Specificity	TSHZ1 Polyclonal Antibody detects endogenous levels of TSHZ1 protein.
Formulation	Liquid in PBS containing 50% glycerol, 0.5% BSA and 0.02% sodium azide.
Storage	Store at -20°C. Avoid repeated freeze-thaw cycles.
Protein Name	Teashirt homolog 1
Gene Name	TSHZ1
Cellular localization	Nucleus .
Purification	The antibody was affinity-purified from rabbit antiserum by affinity-chromatography using epitope-specific immunogen.
Clonality	Polyclonal
Concentration	1 mg/ml
Observed band	
Human Gene ID	10194
Human Swiss-Prot Number	Q6ZSZ6
Alternative Names	TSHZ1; SDCCAG33; TSH1; Teashirt homolog 1; Antigen NY-CO-33; Serologically defined colon cancer antigen 33
Background	This gene encodes a colon cancer antigen that was defined by serological analysis of recombinant cDNA expression libraries. The encoded protein is a member of the teashirt C2H2-type zinc-finger protein family and may be involved in transcriptional

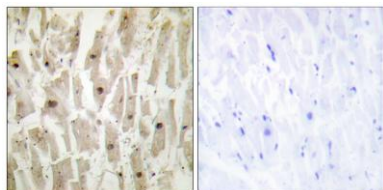




ELK Biotechnology

regulation of developmental processes. Mutations in this gene may be associated with congenital aural atresia syndrome. [provided by RefSeq, Jan 2012],

Immunohistochemistry analysis of paraffin-embedded human heart tissue, using TSH1 Antibody. The picture on the right is blocked with the synthesized peptide.



+86-27-59760950

ELKbio@ELKbiotech.com

www.elkbiotech.com

23-2, No.388 Gaoxin 2nd Road,Wuhan East Lake Hi-tech Development Zone, Hubei , P.R.C