



# DEF-3 rabbit pAb

Cat No.:ES4433

For research use only

## Overview

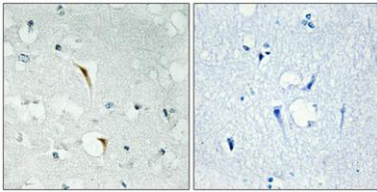
|                                 |   |
|---------------------------------|---|
| <b>Product Name</b>             | DEF-3 rabbit pAb  |
| <b>Host species</b>             | Rabbit  |
| <b>Applications</b>             | WB;IHC;IF;ELISA   |
| <b>Species Cross-Reactivity</b> | Human;Mouse   |
| <b>Recommended dilutions</b>    | Western Blot: 1/500 - 1/2000.<br>Immunohistochemistry: 1/100 - 1/300.<br>Immunofluorescence: 1/200 - 1/1000. ELISA:<br>1/20000. Not yet tested in other applications. |
| <b>Immunogen</b>                | The antiserum was produced against synthesized peptide derived from human RBM6. AA range:991-1040   |
| <b>Specificity</b>              | DEF-3 Polyclonal Antibody detects endogenous levels of DEF-3 protein.   |
| <b>Formulation</b>              | Liquid in PBS containing 50% glycerol, 0.5% BSA and 0.02% sodium azide.   |
| <b>Storage</b>                  | Store at -20°C. Avoid repeated freeze-thaw cycles.  |
| <b>Protein Name</b>             | RNA-binding protein 6   |
| <b>Gene Name</b>                | RBM6  |
| <b>Cellular localization</b>    | Nucleus .   |
| <b>Purification</b>             | The antibody was affinity-purified from rabbit antiserum by affinity-chromatography using epitope-specific immunogen.   |
| <b>Clonality</b>                | Polyclonal  |
| <b>Concentration</b>            | 1 mg/ml   |
| <b>Observed band</b>            | 150kD   |
| <b>Human Gene ID</b>            | 10180   |
| <b>Human Swiss-Prot Number</b>  | P78332  |
| <b>Alternative Names</b>        | RBM6; DEF3; RNA-binding protein 6; Lung cancer antigen NY-LU-12; Protein G16; RNA-binding motif protein 6; RNA-binding protein DEF-3                                  |
| <b>Background</b>               | disease:Defects in RBM6 are found in non-small cell lung cancer (NSCLC) cell lines.,function:Specifically binds poly(G) RNA homopolymers in                           |



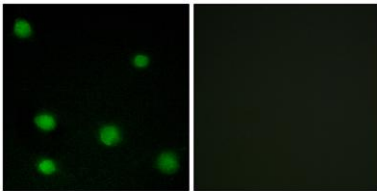


vitro.,PTM:Phosphorylated upon DNA damage, probably by ATM or ATR.,similarity:Contains 1 G-patch domain.,similarity:Contains 1 RRM (RNA recognition motif) domain.,tissue specificity:Ubiquitous in adults.,

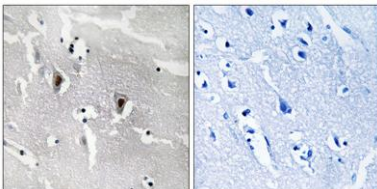
Immunohistochemical analysis of paraffin-embedded Human brain. Antibody was diluted at 1:100(4° overnight). High-pressure and temperature Tris-EDTA,pH8.0 was used for antigen retrieval. Negative contrl (right) obtained from antibody was pre-absorbed by i



Immunofluorescence analysis of COS7 cells, using RBM6 Antibody. The picture on the right is blocked with the synthesized peptide.

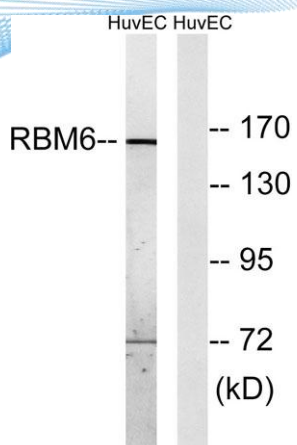


Immunohistochemistry analysis of paraffin-embedded human brain tissue, using RBM6 Antibody. The picture on the right is blocked with the synthesized peptide.





**ELK Biotechnology**



Western blot analysis of lysates from HUVEC cells, using RBM6 Antibody. The lane on the right is blocked with the synthesized peptide.



+86-27-59760950

[ELKbio@ELKbiotech.com](mailto:ELKbio@ELKbiotech.com)

[www.elkbiotech.com](http://www.elkbiotech.com)

23-2, No.388 Gaoxin 2nd Road,Wuhan East Lake Hi-tech Development Zone, Hubei , P.R.C