



LI-cadherin rabbit pAb

Cat No.:ES4430

For research use only

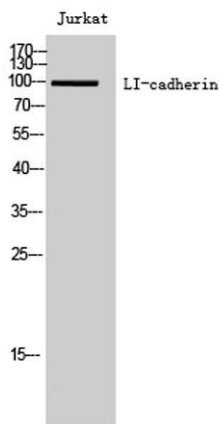
Overview

Product Name	LI-cadherin rabbit pAb
Host species	Rabbit
Applications	WB;IHC;IF;ELISA
Species Cross-Reactivity	Human;Rat;Mouse;
Recommended dilutions	Western Blot: 1/500 - 1/2000. Immunohistochemistry: 1/100 - 1/300. Immunofluorescence: 1/200 - 1/1000. ELISA: 1/40000. Not yet tested in other applications.
Immunogen	The antiserum was produced against synthesized peptide derived from human CDH17. AA range:341-390
Specificity	LI-cadherin Polyclonal Antibody detects endogenous levels of LI-cadherin protein.
Formulation	Liquid in PBS containing 50% glycerol, 0.5% BSA and 0.02% sodium azide.
Storage	Store at -20°C. Avoid repeated freeze-thaw cycles.
Protein Name	Cadherin-17
Gene Name	CDH17
Cellular localization	Cell membrane ; Single-pass type I membrane protein .
Purification	The antibody was affinity-purified from rabbit antiserum by affinity-chromatography using epitope-specific immunogen.
Clonality	Polyclonal
Concentration	1 mg/ml
Observed band	99kD
Human Gene ID	1015
Human Swiss-Prot Number	Q12864
Alternative Names	CDH17; Cadherin-17; Intestinal peptide-associated transporter HPT-1; Liver-intestine cadherin; LI-cadherin
Background	This gene is a member of the cadherin superfamily, genes encoding calcium-dependent,



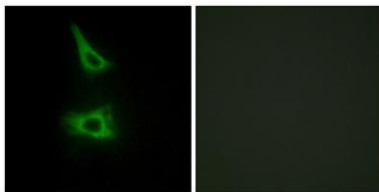


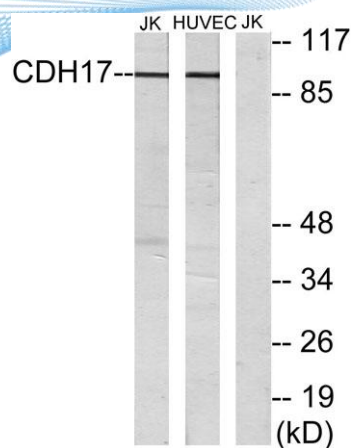
membrane-associated glycoproteins. The encoded protein is cadherin-like, consisting of an extracellular region, containing 7 cadherin domains, and a transmembrane region but lacking the conserved cytoplasmic domain. The protein is a component of the gastrointestinal tract and pancreatic ducts, acting as an intestinal proton-dependent peptide transporter in the first step in oral absorption of many medically important peptide-based drugs. The protein may also play a role in the morphological organization of liver and intestine. Alternative splicing results in multiple transcript variants. [provided by RefSeq, Jan 2009],



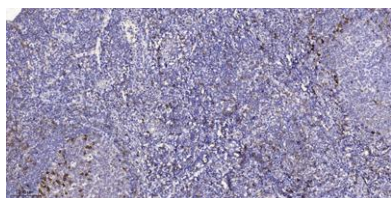
Western Blot analysis of Jurkat cells using LI-cadherin Polyclonal Antibody

Immunofluorescence analysis of HeLa cells, using CDH17 Antibody. The picture on the right is blocked with the synthesized peptide.





Western blot analysis of lysates from Jurkat and HUVEC cells, using CDH17 Antibody. The lane on the right is blocked with the synthesized peptide.



Immunohistochemical analysis of paraffin-embedded human tonsil. 1, Antibody was diluted at 1:200(4° overnight). 2, Tris-EDTA,pH9.0 was used for antigen retrieval. 3,Secondary antibody was diluted at 1:200(room temperature, 45min).

