



KIF20A rabbit pAb

Cat No.:ES4424

For research use only

Overview

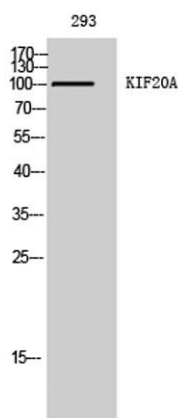
Product Name	KIF20A rabbit pAb
Host species	Rabbit
Applications	WB;IHC;IF;ELISA
Species Cross-Reactivity	Human;Rat;Mouse;
Recommended dilutions	Western Blot: 1/500 - 1/2000. Immunohistochemistry: 1/100 - 1/300. Immunofluorescence: 1/200 - 1/1000. ELISA: 1/20000. Not yet tested in other applications.
Immunogen	The antiserum was produced against synthesized peptide derived from human KIF20A. AA range:501-550
Specificity	KIF20A Polyclonal Antibody detects endogenous levels of KIF20A protein.
Formulation	Liquid in PBS containing 50% glycerol, 0.5% BSA and 0.02% sodium azide.
Storage	Store at -20°C. Avoid repeated freeze-thaw cycles.
Protein Name	Kinesin-like protein KIF20A
Gene Name	KIF20A
Cellular localization	Golgi apparatus . Cytoplasm, cytoskeleton, spindle . Localizes to the spindle midzone during anaphase and telophase. .
Purification	The antibody was affinity-purified from rabbit antiserum by affinity-chromatography using epitope-specific immunogen.
Clonality	Polyclonal
Concentration	1 mg/ml
Observed band	100kD
Human Gene ID	10112
Human Swiss-Prot Number	O95235
Alternative Names	KIF20A; MKLP2; RAB6KIFL; Kinesin-like protein KIF20A; GG10_2; Mitotic kinesin-like protein 2; MKlp2; Rab6-interacting kinesin-like protein; Rabkinesin-6



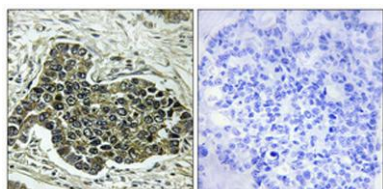


Background

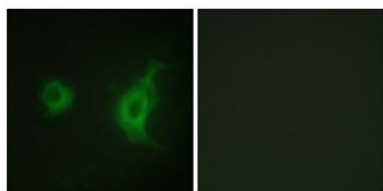
function: Interacts with guanosine triphosphate (GTP)-bound forms of RAB6A and RAB6B. May act as a motor required for the retrograde RAB6 regulated transport of Golgi membranes and associated vesicles along microtubules. Has a microtubule plus end-directed motility.,similarity: Belongs to the kinesin-like protein family.,similarity: Contains 1 kinesin-motor domain.,



Western Blot analysis of 293 cells using KIF20A Polyclonal Antibody



Immunohistochemical analysis of paraffin-embedded Human lung cancer. Antibody was diluted at 1:100(4° overnight). High-pressure and temperature Tris-EDTA,pH8.0 was used for antigen retrieval. Negative control (right) obtained from antibody was pre-absorbed by immunogen peptide.



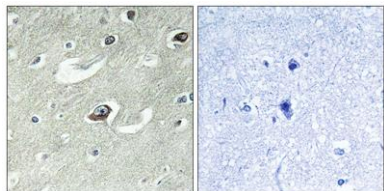
Immunofluorescence analysis of HUVEC cells, using KIF20A Antibody. The picture on the right is blocked with the synthesized peptide.





ELK Biotechnology

Immunohistochemistry analysis of paraffin-embedded human brain tissue, using KIF20A Antibody. The picture on the right is blocked with the synthesized peptide.



+86-27-59760950

ELKbio@ELKbiotech.com

www.elkbiotech.com

23-2, No.388 Gaoxin 2nd Road,Wuhan East Lake Hi-tech Development Zone, Hubei , P.R.C