



CD24 rabbit pAb

Cat No.:ES4405

For research use only

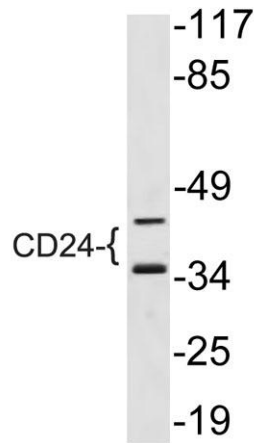
Overview

| | |
|---------------------------------|---|
| Product Name | CD24 rabbit pAb |
| Host species | Rabbit |
| Applications | WB;ELISA |
| Species Cross-Reactivity | Human;Mouse;Rat |
| Recommended dilutions | Western Blot: 1/500 - 1/2000. ELISA: 1/10000. Not yet tested in other applications. |
| Immunogen | The antiserum was produced against synthesized peptide derived from human CD24. AA range:14-63 |
| Specificity | CD24 Polyclonal Antibody detects endogenous levels of CD24 protein. |
| Formulation | Liquid in PBS containing 50% glycerol, 0.5% BSA and 0.02% sodium azide. |
| Storage | Store at -20°C. Avoid repeated freeze-thaw cycles. |
| Protein Name | Signal transducer CD24 |
| Gene Name | CD24 |
| Cellular localization | Cell membrane; Lipid-anchor, GPI-anchor. |
| Purification | The antibody was affinity-purified from rabbit antiserum by affinity-chromatography using epitope-specific immunogen. |
| Clonality | Polyclonal |
| Concentration | 1 mg/ml |
| Observed band | 35,45kD |
| Human Gene ID | 100133941 |
| Human Swiss-Prot Number | P25063 |
| Alternative Names | CD24; CD24A; Signal transducer CD24; Small cell lung carcinoma cluster 4 antigen; CD antigen CD24 |
| Background | This gene encodes a sialoglycoprotein that is expressed on mature granulocytes and B cells and modulates growth and differentiation signals to these cells. The precursor protein is cleaved to a short 32 amino acid mature peptide which is anchored via a glycosyl phosphatidylinositol (GPI) link to the cell surface. This gene was missing from |





previous genome assemblies, but is properly located on chromosome 6. Non-transcribed pseudogenes have been designated on chromosomes 1, 15, 20, and Y. Alternative splicing results in multiple transcript variants. [provided by RefSeq, Apr 2014],



Western blot analysis of lysate from NIH/3T3 cells, using CD24 antibody.

