

USP11 rabbit pAb

Cat No.:ES4401

For research use only

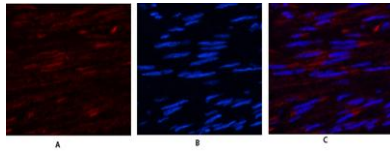
Overview

Product Name	USP11 rabbit pAb
Host species	Rabbit
Applications	IF;WB;ELISA
Species Cross-Reactivity	Human;Mouse;Rat
Recommended dilutions	IF: 1:50-200 Western Blot: 1/500 - 1/2000. ELISA: 1/20000. Not yet tested in other applications.
Immunogen	Synthesized peptide derived from the Internal region of human USP11.
Specificity	USP11 Polyclonal Antibody detects endogenous levels of USP11 protein.
Formulation	Liquid in PBS containing 50% glycerol, 0.5% BSA and 0.02% sodium azide.
Storage	Store at -20°C. Avoid repeated freeze-thaw cycles.
Protein Name	Ubiquitin carboxyl-terminal hydrolase 11
Gene Name	USP11
Cellular localization	Nucleus . Cytoplasm . Chromosome . Predominantly nuclear (PubMed:12084015, PubMed:15314155). Associates with chromatin (PubMed:20601937, PubMed:20233726). .
Purification	The antibody was affinity-purified from rabbit antiserum by affinity-chromatography using epitope-specific immunogen.
Clonality	Polyclonal
Concentration	1 mg/ml
Observed band	105kD
Human Gene ID	8237
Human Swiss-Prot Number	P51784
Alternative Names	USP11; UHX1; Ubiquitin carboxyl-terminal hydrolase 11; Deubiquitinating enzyme 11; Ubiquitin thioesterase 11; Ubiquitin-specific-processing protease 11
Background	Protein ubiquitination controls many intracellular processes, including cell cycle progression,

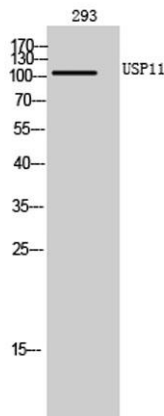
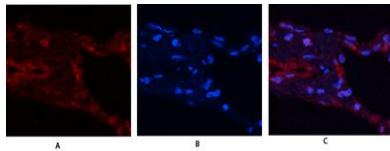


transcriptional activation, and signal transduction. This dynamic process, involving ubiquitin conjugating enzymes and deubiquitinating enzymes, adds and removes ubiquitin. Deubiquitinating enzymes are cysteine proteases that specifically cleave ubiquitin from ubiquitin-conjugated protein substrates. This gene encodes a deubiquitinating enzyme which lies in a gene cluster on chromosome Xp11.23 [provided by RefSeq, Jul 2008],

Immunofluorescence analysis of human-uterus tissue.
1, USP11 Polyclonal Antibody(red) was diluted at 1:200(4° overnight). 2, Cy3 labeled Secondary antibody was diluted at 1:300(room temperature, 50min). 3, Picture B: DAPI(blue) 10min. Picture A: Target. Picture C: Merged.



Immunofluorescence analysis of human-lung tissue.
1, USP11 Polyclonal Antibody(red) was diluted at 1:200(4° overnight). 2, Cy3 labeled Secondary antibody was diluted at 1:300(room temperature, 50min). 3, Picture B: DAPI(blue) 10min. Picture A: Target. Picture C: Merged.



Western Blot analysis of 293 cells using USP11 Polyclonal Antibody. Secondary antibody(catalog#:RS0002) was diluted at 1:20000 cells nucleus extracted by Minute TM Cytoplasmic and Nuclear Fractionation kit (SC-003, Invent biotech, MN, USA).





ELK Biotechnology



+86-27-59760950

ELKbio@ELKbiotech.com

www.elkbiotech.com

23-2, No.388 Gaoxin 2nd Road, Wuhan East Lake Hi-tech Development Zone, Hubei, P.R.C.