



# Ras-GRF1 (phospho Ser916) rabbit pAb

Cat No.:ES4393

For research use only

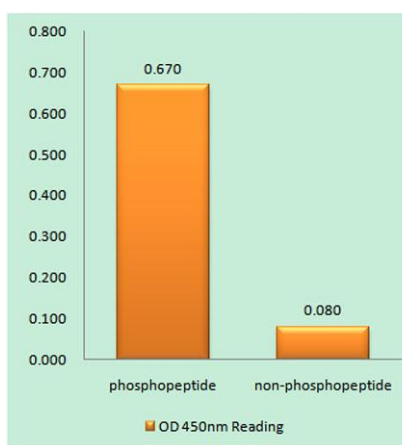
## Overview

<b>Product Name</b>	Ras-GRF1 (phospho Ser916) rabbit pAb
<b>Host species</b>	Rabbit
<b>Applications</b>	WB;IHC;IF;ELISA
<b>Species Cross-Reactivity</b>	Mouse;Rat
<b>Recommended dilutions</b>	Immunohistochemistry: 1/100 - 1/300. Immunofluorescence: 1/200 - 1/1000. ELISA: 1/20000. Not yet tested in other applications.
<b>Immunogen</b>	The antiserum was produced against synthesized peptide derived from mouse Ras-GRF1 around the phosphorylation site of Ser916. AA range:882-931
<b>Specificity</b>	Phospho-Ras-GRF1 (S916) Polyclonal Antibody detects endogenous levels of Ras-GRF1 protein only when phosphorylated at S916.
<b>Formulation</b>	Liquid in PBS containing 50% glycerol, 0.5% BSA and 0.02% sodium azide.
<b>Storage</b>	Store at -20°C. Avoid repeated freeze-thaw cycles.
<b>Protein Name</b>	Ras-specific guanine nucleotide-releasing factor 1
<b>Gene Name</b>	RASGRF1
<b>Cellular localization</b>	
<b>Purification</b>	The antibody was affinity-purified from rabbit antiserum by affinity-chromatography using epitope-specific immunogen.
<b>Clonality</b>	Polyclonal
<b>Concentration</b>	1 mg/ml
<b>Observed band</b>	
<b>Human Gene ID</b>	
<b>Human Swiss-Prot Number</b>	
<b>Alternative Names</b>	RASGRF1; CDC25; GNRP; GRF1; Ras-specific guanine nucleotide-releasing factor 1; Ras-GRF1; Guanine nucleotide-releasing protein; GNRP; Ras-specific nucleotide exchange factor CDC25
<b>Background</b>	]RASGRF1 (Ras Protein Specific Guanine Nucleotide Releasing Factor 1) is a Protein Coding gene.





Diseases associated with RASGRF1 include bleeding disorder, platelet-type, 18 and refractive error. Among its related pathways are Signaling by GPCR and Immune System. GO annotations related to this gene include guanyl-nucleotide exchange factor activity and Ras guanyl-nucleotide exchange factor activity. An important paralog of this gene is RALGDS. promotes the exchange of Ras-bound GDP by GTP.



Enzyme-Linked Immunosorbent Assay (Phospho-ELISA) for Immunogen Phosphopeptide (Phospho-left) and Non-Phosphopeptide (Phospho-right), using Ras-GRF1 (Phospho-Ser916) Antibody

Immunohistochemistry analysis of paraffin-embedded human brain, using Ras-GRF1 (Phospho-Ser916) Antibody. The picture on the right is blocked with the phospho peptide.

