



# 4E-BP1 (phospho Thr69) rabbit pAb

Cat No.:ES4385

For research use only

## Overview

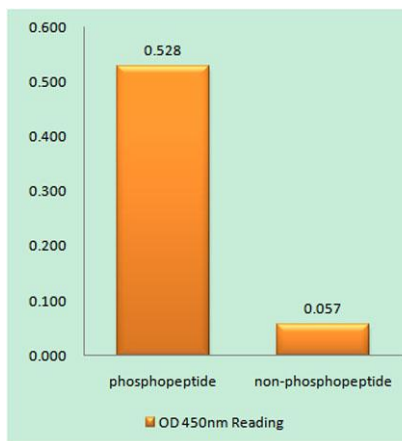
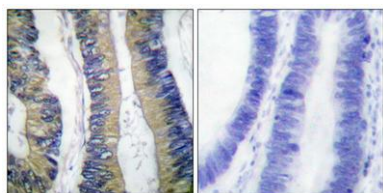
<b>Product Name</b>	4E-BP1 (phospho Thr69) rabbit pAb
<b>Host species</b>	Rabbit
<b>Applications</b>	WB;IHC;IF;ELISA
<b>Species Cross-Reactivity</b>	Mouse;Rat
<b>Recommended dilutions</b>	Western Blot: 1/500 - 1/2000. Immunohistochemistry: 1/100 - 1/300. ELISA: 1/20000. Not yet tested in other applications.
<b>Immunogen</b>	The antiserum was produced against synthesized peptide derived from mouse 4E-BP1 around the phosphorylation site of Thr69. AA range:35-84
<b>Specificity</b>	Phospho-4E-BP1 (T69) Polyclonal Antibody detects endogenous levels of 4E-BP1 protein only when phosphorylated at T69.
<b>Formulation</b>	Liquid in PBS containing 50% glycerol, 0.5% BSA and 0.02% sodium azide.
<b>Storage</b>	Store at -20°C. Avoid repeated freeze-thaw cycles.
<b>Protein Name</b>	Eukaryotic translation initiation factor 4E-binding protein 1
<b>Gene Name</b>	EIF4EBP1
<b>Cellular localization</b>	
<b>Purification</b>	The antibody was affinity-purified from rabbit antiserum by affinity-chromatography using epitope-specific immunogen.
<b>Clonality</b>	Polyclonal
<b>Concentration</b>	1 mg/ml
<b>Observed band</b>	12kD
<b>Human Gene ID</b>	
<b>Human Swiss-Prot Number</b>	
<b>Alternative Names</b>	EIF4EBP1; Eukaryotic translation initiation factor 4E-binding protein 1; 4E-BP1; eIF4E-binding protein 1; Phosphorylated heat- and acid-stable protein regulated by insulin 1; PHAS-I
<b>Background</b>	EIF4EBP1 encodes one member of a family of





translation repressor proteins. The eukaryotic translation initiation factor 4E binding protein 1 directly interacts with eukaryotic translation initiation factor 4E (eIF4E), which is a limiting component of the multisubunit complex that recruits 40S ribosomal subunits to the 5' end of mRNAs. Interaction of this protein with eIF4E inhibits complex assembly and represses translation. This protein is phosphorylated in response to various signals including UV irradiation and insulin signaling, resulting in its dissociation from eIF4E and activation of mRNA translation.

Immunohistochemical analysis of paraffin-embedded Human colon cancer. Antibody was diluted at 1:100(4° overnight). High-pressure and temperature Tris-EDTA,pH8.0 was used for antigen retrieval. Negative contrl (right) obtained from antibody was pre-absorb

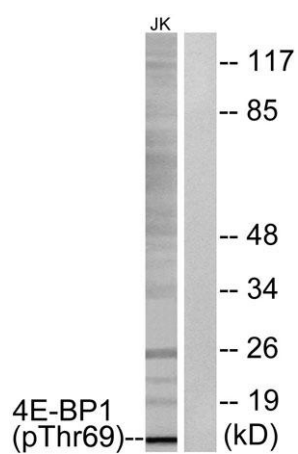
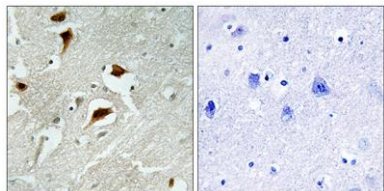


Enzyme-Linked Immunosorbent Assay (Phospho-ELISA) for Immunogen Phosphopeptide (Phospho-left) and Non-Phosphopeptide (Phospho-right), using 4E-BP1 (Phospho-Thr69) Antibody





Immunohistochemistry analysis of paraffin-embedded human brain carcinoma, using 4E-BP1 (Phospho-Thr69) Antibody. The picture on the right is blocked with the phospho peptide.



Western blot analysis of lysates from Jurkat cells treated with EGF 200ng/ml 30', using 4E-BP1 (Phospho-Thr69) Antibody. The lane on the right is blocked with the phospho peptide.

