



# MIP-1b rabbit pAb

Cat No.:ES4377

For research use only

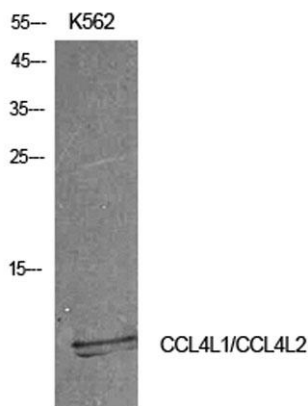
## Overview

<b>Product Name</b>	MIP-1b rabbit pAb
<b>Host species</b>	Rabbit
<b>Applications</b>	WB;IHC
<b>Species Cross-Reactivity</b>	Human;Rat;Mouse;
<b>Recommended dilutions</b>	WB 1:500-2000;IHC-p 1:50-300
<b>Immunogen</b>	The antiserum was produced against synthesized peptide derived from the Internal region of human CCL4L1/CCL4L2. AA range:31-80
<b>Specificity</b>	MIP-1b Polyclonal Antibody detects endogenous levels of MIP-1b protein.
<b>Formulation</b>	Liquid in PBS containing 50% glycerol, 0.5% BSA and 0.02% sodium azide.
<b>Storage</b>	Store at -20°C. Avoid repeated freeze-thaw cycles.
<b>Protein Name</b>	C-C motif chemokine 4-like
<b>Gene Name</b>	CCL4L1/CCL4L2
<b>Cellular localization</b>	Secreted .
<b>Purification</b>	The antibody was affinity-purified from rabbit antiserum by affinity-chromatography using epitope-specific immunogen.
<b>Clonality</b>	Polyclonal
<b>Concentration</b>	1 mg/ml
<b>Observed band</b>	11kD
<b>Human Gene ID</b>	388372/9560
<b>Human Swiss-Prot Number</b>	Q8NHW4
<b>Alternative Names</b>	CCL4L1; CCL4L; LAG1; SCYA4L1; CCL4L2; CCL4L; SCYA4L2; C-C motif chemokine 4-like; Lymphocyte activation gene 1 protein; LAG-1; Macrophage inflammatory protein 1-beta; MIP-1-beta; Monocyte adherence-induced protein 5-alpha; Small-inducible cytokine A4-like
<b>Background</b>	This gene is one of several cytokine genes that are clustered on the q-arm of chromosome 17. Cytokines are a family of secreted proteins that

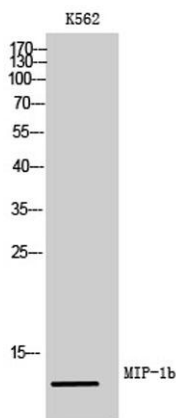




function in inflammatory and immunoregulatory processes. The protein encoded by this family member is similar to the chemokine (C-C motif) ligand 4 product, which inhibits HIV entry by binding to the cellular receptor CCR5. The copy number of this gene varies among individuals, where most individuals have one to five copies. This gene copy contains a non-consensus splice acceptor site at the 3' terminal exon found in other highly similar gene copies, and it thus uses other alternative splice sites for the 3' terminal exon, resulting in multiple transcript variants. [provided by RefSeq, Apr 2014],



Western Blot analysis of K562 cells using MIP-1b Polyclonal Antibody. Antibody was diluted at 1:500. Secondary antibody(catalog#:RS0002) was diluted at 1:20000

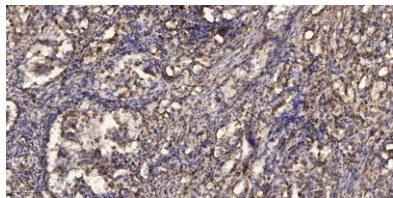


Western Blot analysis of K562 cells using MIP-1b Polyclonal Antibody diluted at 1:500. Secondary antibody(catalog#:RS0002) was diluted at 1:20000





**ELK Biotechnology**



Immunohistochemical analysis of paraffin-embedded human Squamous cell carcinoma of lung. 1, Antibody was diluted at 1:200(4° overnight). 2, Tris-EDTA,pH9.0 was used for antigen retrieval. 3,Secondary antibody was diluted at 1:200(room temperature, 45min).



+86-27-59760950

[ELKbio@ELKbiotech.com](mailto:ELKbio@ELKbiotech.com)

[www.elkbiotech.com](http://www.elkbiotech.com)

23-2, No.388 Gaoxin 2nd Road,Wuhan East Lake Hi-tech Development Zone, Hubei , P.R.C