



Ebi3 rabbit pAb

Cat No.:ES4372

For research use only

Overview

Product Name	Ebi3 rabbit pAb
Host species	Rabbit
Applications	WB;ELISA
Species Cross-Reactivity	Human;Mouse
Recommended dilutions	Western Blot: 1/500 - 1/2000. ELISA: 1/10000. Not yet tested in other applications.
Immunogen	The antiserum was produced against synthesized peptide derived from the Internal region of human EBI3. AA range:101-150
Specificity	Ebi3 Polyclonal Antibody detects endogenous levels of Ebi3 protein.
Formulation	Liquid in PBS containing 50% glycerol, 0.5% BSA and 0.02% sodium azide.
Storage	Store at -20°C. Avoid repeated freeze-thaw cycles.
Protein Name	Interleukin-27 subunit beta
Gene Name	EBI3
Cellular localization	Secreted .
Purification	The antibody was affinity-purified from rabbit antiserum by affinity-chromatography using epitope-specific immunogen.
Clonality	Polyclonal
Concentration	1 mg/ml
Observed band	25kD
Human Gene ID	10148
Human Swiss-Prot Number	Q14213
Alternative Names	EBI3; IL27B; Interleukin-27 subunit beta; IL-27 subunit beta; IL-27B; Epstein-Barr virus-induced gene 3 protein; EBV-induced gene 3 protein
Background	This gene was identified by its induced expression in B lymphocytes in response Epstein-Barr virus infection. It encodes a secreted glycoprotein belonging to the hematopoietin receptor family, and heterodimerizes with a 28 kDa protein to form

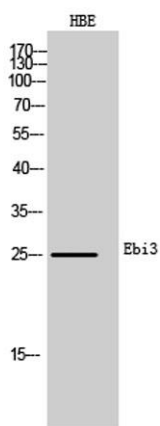




ELK Biotechnology

interleukin 27 (IL-27). IL-27 regulates T cell and inflammatory responses, in part by activating the Jak/STAT pathway of CD4+ T cells. [provided by RefSeq, Sep 2008],

Western Blot analysis of HBE cells using Ebi3 Polyclonal Antibody. Secondary antibody(catalog#:RS0002) was diluted at 1:20000



+86-27-59760950

ELKbio@ELKbiotech.com

www.elkbiotech.com

23-2, No.388 Gaoxin 2nd Road,Wuhan East Lake Hi-tech Development Zone, Hubei , P.R.C