



Amphiregulin rabbit pAb

Cat No.:ES4371

For research use only

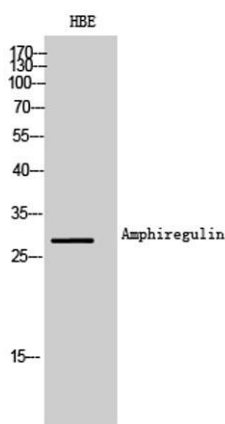
Overview

Product Name	Amphiregulin rabbit pAb
Host species	Rabbit
Applications	WB;ELISA
Species Cross-Reactivity	Human;Rat;Mouse;
Recommended dilutions	Western Blot: 1/500 - 1/2000. ELISA: 1/10000. Not yet tested in other applications.
Immunogen	The antiserum was produced against synthesized peptide derived from the Internal region of human AREG/AREGB. AA range:91-140
Specificity	Amphiregulin Polyclonal Antibody detects endogenous levels of Amphiregulin protein.
Formulation	Liquid in PBS containing 50% glycerol, 0.5% BSA and 0.02% sodium azide.
Storage	Store at -20°C. Avoid repeated freeze-thaw cycles.
Protein Name	Amphiregulin
Gene Name	AREG/AREGB
Cellular localization	Membrane; Single-pass membrane protein.
Purification	The antibody was affinity-purified from rabbit antiserum by affinity-chromatography using epitope-specific immunogen.
Clonality	Polyclonal
Concentration	1 mg/ml
Observed band	17kD
Human Gene ID	374/727738
Human Swiss-Prot Number	P15514
Alternative Names	AREG; SDGF; AREGB; Amphiregulin; AR; Colorectum cell-derived growth factor; CRDGF
Background	The protein encoded by this gene is a member of the epidermal growth factor family. It is an autocrine growth factor as well as a mitogen for astrocytes, Schwann cells and fibroblasts. It is related to epidermal growth factor (EGF) and transforming growth factor alpha (TGF-alpha). The protein





interacts with the EGF/TGF- α receptor to promote the growth of normal epithelial cells, and it inhibits the growth of certain aggressive carcinoma cell lines. It also functions in mammary gland, oocyte and bone tissue development. This gene is associated with a psoriasis-like skin phenotype, and is also associated with other pathological disorders, including various types of cancers and inflammatory conditions. [provided by RefSeq, Apr 2014],



Western Blot analysis of HBE cells using Amphiregulin Polyclonal Antibody. Secondary antibody(catalog#:RS0002) was diluted at 1:20000

