



CD155 rabbit pAb

Cat No.:ES4358

For research use only

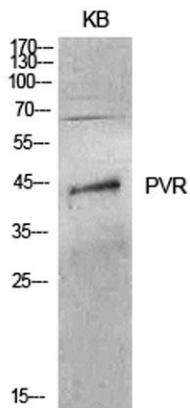
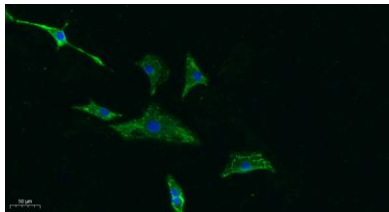
Overview

Product Name	CD155 rabbit pAb
Host species	Rabbit
Applications	WB IF;ELISA
Species Cross-Reactivity	Human;Mouse;Rat
Recommended dilutions	WB 1:500-2000 IF 1:100-300 ELISA 1:5000-20000 Not yet tested in other applications.
Immunogen	The antiserum was produced against synthesized peptide derived from the Internal region of human PVR. AA range:81-130
Specificity	CD155 Polyclonal Antibody detects endogenous levels of CD155 protein.
Formulation	Liquid in PBS containing 50% glycerol, 0.5% BSA and 0.02% sodium azide.
Storage	Store at -20°C. Avoid repeated freeze-thaw cycles.
Protein Name	Poliovirus receptor
Gene Name	PVR
Cellular localization	[Isoform Alpha]: Cell membrane; Single-pass type I membrane protein.; [Isoform Delta]: Cell membrane; Single-pass type I membrane protein.; [Isoform Beta]: Secreted.; [Isoform Gamma]: Secreted.
Purification	The antibody was affinity-purified from rabbit antiserum by affinity-chromatography using epitope-specific immunogen.
Clonality	Polyclonal
Concentration	1 mg/ml
Observed band	70kD
Human Gene ID	5817
Human Swiss-Prot Number	P15151
Alternative Names	PVR; PVS; Poliovirus receptor; Nectin-like protein 5; NECL-5; CD155
Background	The protein encoded by this gene is a transmembrane glycoprotein belonging to the

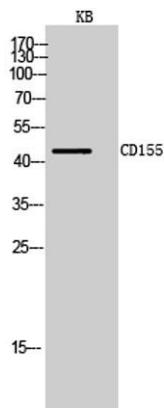


immunoglobulin superfamily. The external domain mediates cell attachment to the extracellular matrix molecule vitronectin, while its intracellular domain interacts with the dynein light chain Tctex-1/DYNLT1. The gene is specific to the primate lineage, and serves as a cellular receptor for poliovirus in the first step of poliovirus replication. Multiple transcript variants encoding different isoforms have been found for this gene. [provided by RefSeq, Oct 2008],

Immunofluorescence analysis of A549. 1,primary Antibody was diluted at 1:200(4°C overnight). 2, Goat Anti Rabbit IgG (H&L) - Alexa Fluor 488 Secondary antibody was diluted at 1:1000(room temperature, 50min).3, Picture B: DAPI(blue) 10min.



Western Blot analysis of KB cells using CD155 Polyclonal Antibody. Secondary antibody(catalog#:RS0002) was diluted at 1:20000



Western Blot analysis of KB cells using CD155 Polyclonal Antibody. Secondary antibody(catalog#:RS0002) was diluted at 1:20000





ELK Biotechnology



+86-27-59760950

ELKbio@ELKbiotech.com

www.elkbiotech.com

23-2, No.388 Gaoxin 2nd Road, Wuhan East Lake Hi-tech Development Zone, Hubei, P.R.C.