



# CD300c rabbit pAb

Cat No.:ES4349

For research use only

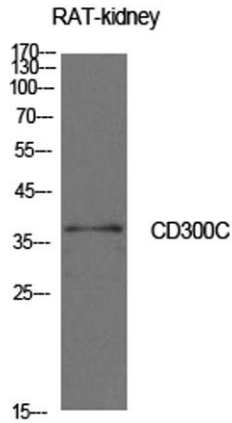
## Overview

<b>Product Name</b>	CD300c rabbit pAb
<b>Host species</b>	Rabbit
<b>Applications</b>	WB;ELISA
<b>Species Cross-Reactivity</b>	Human;Rat;Mouse;
<b>Recommended dilutions</b>	Western Blot: 1/500 - 1/2000. ELISA: 1/10000. Not yet tested in other applications.
<b>Immunogen</b>	The antiserum was produced against synthesized peptide derived from the Internal region of human CD300C. AA range:131-180
<b>Specificity</b>	CD300c Polyclonal Antibody detects endogenous levels of CD300c protein.
<b>Formulation</b>	Liquid in PBS containing 50% glycerol, 0.5% BSA and 0.02% sodium azide.
<b>Storage</b>	Store at -20°C. Avoid repeated freeze-thaw cycles.
<b>Protein Name</b>	CMRF35-like molecule 6
<b>Gene Name</b>	CD300C
<b>Cellular localization</b>	Cell membrane ; Single-pass type I membrane protein .
<b>Purification</b>	The antibody was affinity-purified from rabbit antiserum by affinity-chromatography using epitope-specific immunogen.
<b>Clonality</b>	Polyclonal
<b>Concentration</b>	1 mg/ml
<b>Observed band</b>	37kD
<b>Human Gene ID</b>	10871
<b>Human Swiss-Prot Number</b>	Q08708
<b>Alternative Names</b>	CD300C; CMRF35; CMRF35A; CMRF35A1; IGSF16; CMRF35-like molecule 6; CLM-6; CD300 antigen-like family member C; CMRF35-A1; CMRF-35; Immunoglobulin superfamily member 16; IgSF16; CD300c
<b>Background</b>	CD300c molecule(CD300C) Homo sapiens The CMRF35 antigen, which was identified by reactivity

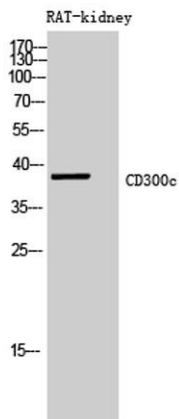




with a monoclonal antibody, is present on monocytes, neutrophils, and some T and B lymphocytes (Jackson et al., 1992 [PubMed 1349532]).[supplied by OMIM, Mar 2008],



Western Blot analysis of rat kidney cells using CD300c Polyclonal Antibody. Antibody was diluted at 1:500. Secondary antibody(catalog#:RS0002) was diluted at 1:20000



Western Blot analysis of RAT-kidney cells using CD300c Polyclonal Antibody diluted at 1:500. Secondary antibody(catalog#:RS0002) was diluted at 1:20000

