



CD244 rabbit pAb

Cat No.:ES4345

For research use only

Overview

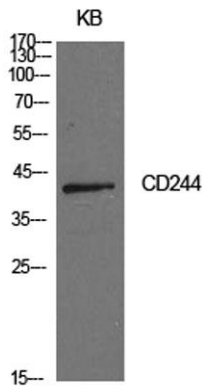
Product Name	CD244 rabbit pAb
Host species	Rabbit
Applications	WB;IHC;IF;ELISA
Species Cross-Reactivity	Human;Rat;Mouse;
Recommended dilutions	Western Blot: 1/500 - 1/2000. IHC-p: 1:100-1:300. ELISA: 1/10000. Not yet tested in other applications.
Immunogen	The antiserum was produced against synthesized peptide derived from the Internal region of human CD244. AA range:101-150
Specificity	CD244 Polyclonal Antibody detects endogenous levels of CD244 protein.
Formulation	Liquid in PBS containing 50% glycerol, 0.5% BSA and 0.02% sodium azide.
Storage	Store at -20°C. Avoid repeated freeze-thaw cycles.
Protein Name	Natural killer cell receptor 2B4
Gene Name	CD244
Cellular localization	Membrane ; Single-pass type I membrane protein . Cell membrane . Receptor engagement results in a recruitment to lipid drafts essential for the subsequent tyrosine phosphorylation of the ITSMs. .
Purification	The antibody was affinity-purified from rabbit antiserum by affinity-chromatography using epitope-specific immunogen.
Clonality	Polyclonal
Concentration	1 mg/ml
Observed band	42kD
Human Gene ID	51744
Human Swiss-Prot Number	Q9BZW8
Alternative Names	CD244; 2B4; Natural killer cell receptor 2B4; NK cell activation-inducing ligand; NAIL; NK cell type I receptor protein 2B4; NKR2B4; h2B4; CD244
Background	This gene encodes a cell surface receptor expressed on natural killer (NK) cells (and some T cells) that



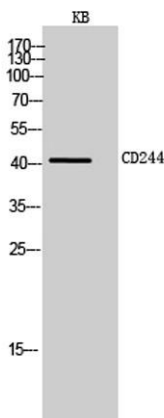


mediate non-major histocompatibility complex (MHC) restricted killing. The interaction between NK-cell and target cells via this receptor is thought to modulate NK-cell cytolytic activity. Alternatively spliced transcript variants encoding different isoforms have been found for this gene.[provided by RefSeq, Oct 2009],

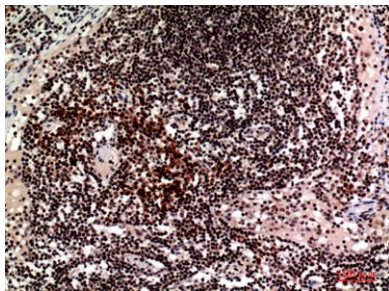
Western Blot analysis of KB cells using CD244 Polyclonal Antibody. Secondary antibody(catalog#:RS0002) was diluted at 1:20000



Western Blot analysis of KB cells using CD244 Polyclonal Antibody. Secondary antibody(catalog#:RS0002) was diluted at 1:20000

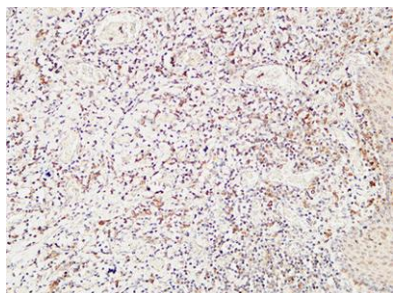


Immunohistochemical analysis of paraffin-embedded human-lymph, antibody was diluted at 1:100





ELK Biotechnology



Immunohistochemical analysis of paraffin-embedded Human Amygdala. 1, Antibody was diluted at 1:200(4° overnight). 2, High-pressure and temperature EDTA, pH8.0 was used for antigen retrieval. 3,Secondary antibody was diluted at 1:200(room temperature, 30min).



+86-27-59760950

ELKbio@ELKbiotech.com

www.elkbiotech.com

23-2, No.388 Gaoxin 2nd Road,Wuhan East Lake Hi-tech Development Zone, Hubei , P.R.C