



Integrin α 6 rabbit pAb

Cat No.:ES4320

For research use only

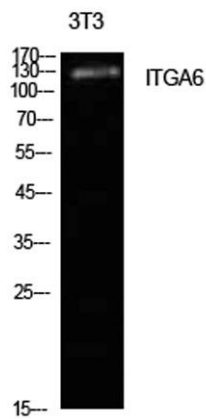
Overview

Product Name	Integrin α 6 rabbit pAb
Host species	Rabbit
Applications	WB;ELISA
Species Cross-Reactivity	Human;Mouse;Rat
Recommended dilutions	Western Blot: 1/500 - 1/2000. ELISA: 1/10000. Not yet tested in other applications.
Immunogen	The antiserum was produced against synthesized peptide derived from the Internal region of human ITGA6. AA range:901-950
Specificity	Integrin α 6 Polyclonal Antibody detects endogenous levels of Integrin α 6 protein.
Formulation	Liquid in PBS containing 50% glycerol, 0.5% BSA and 0.02% sodium azide.
Storage	Store at -20°C . Avoid repeated freeze-thaw cycles.
Protein Name	Integrin alpha-6
Gene Name	ITGA6
Cellular localization	Cell membrane ; Single-pass type I membrane protein . Cell membrane ; Lipid-anchor .
Purification	The antibody was affinity-purified from rabbit antiserum by affinity-chromatography using epitope-specific immunogen.
Clonality	Polyclonal
Concentration	1 mg/ml
Observed band	125kD
Human Gene ID	3655
Human Swiss-Prot Number	P23229
Alternative Names	ITGA6; Integrin alpha-6; CD49 antigen-like family member F; VLA-6; CD49f
Background	integrin subunit alpha 6(ITGA6) Homo sapiens The gene encodes a member of the integrin alpha chain family of proteins. Integrins are heterodimeric integral membrane proteins composed of an alpha chain and a beta chain that function in cell surface

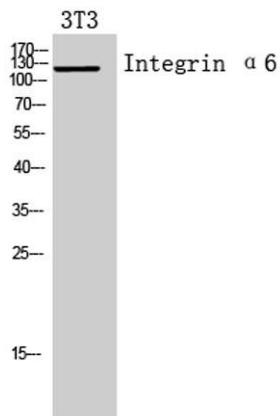




adhesion and signaling. The encoded preproprotein is proteolytically processed to generate light and heavy chains that comprise the alpha 6 subunit. This subunit may associate with a beta 1 or beta 4 subunit to form an integrin that interacts with extracellular matrix proteins including members of the laminin family. The alpha 6 beta 4 integrin may promote tumorigenesis, while the alpha 6 beta 1 integrin may negatively regulate erbB2/HER2 signaling. Alternative splicing results in multiple transcript variants. [provided by RefSeq, Oct 2015],



Western Blot analysis of NIH-3T3 cells using Integrin $\alpha 6$ Polyclonal Antibody. Secondary antibody(catalog#:RS0002) was diluted at 1:20000



Western Blot analysis of 3T3 cells using Integrin $\alpha 6$ Polyclonal Antibody. Secondary antibody(catalog#:RS0002) was diluted at 1:20000

