



# Stra8 rabbit pAb

Cat No.:ES4287

For research use only

## Overview

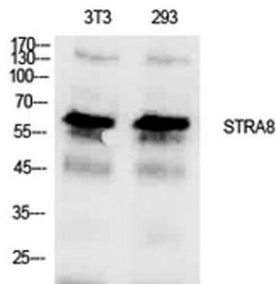
<b>Product Name</b>	Stra8 rabbit pAb
<b>Host species</b>	Rabbit
<b>Applications</b>	WB;IHC
<b>Species Cross-Reactivity</b>	Human;Rat;Mouse;
<b>Recommended dilutions</b>	WB 1:500-2000;IHC-p 1:50-300
<b>Immunogen</b>	The antiserum was produced against synthesized peptide derived from the Internal region of human STRA8. AA range:151-200
<b>Specificity</b>	Stra8 Polyclonal Antibody detects endogenous levels of Stra8 protein.
<b>Formulation</b>	Liquid in PBS containing 50% glycerol, 0.5% BSA and 0.02% sodium azide.
<b>Storage</b>	Store at -20°C. Avoid repeated freeze-thaw cycles.
<b>Protein Name</b>	Stimulated by retinoic acid gene 8 protein homolog
<b>Gene Name</b>	STRA8
<b>Cellular localization</b>	Cytoplasm . Nucleus . Shuttles between nucleus and cytoplasm. Nuclear export is XPO1-dependent. .
<b>Purification</b>	The antibody was affinity-purified from rabbit antiserum by affinity-chromatography using epitope-specific immunogen.
<b>Clonality</b>	Polyclonal
<b>Concentration</b>	1 mg/ml
<b>Observed band</b>	66kD
<b>Human Gene ID</b>	346673
<b>Human Swiss-Prot Number</b>	Q7Z7C7
<b>Alternative Names</b>	STRA8; Stimulated by retinoic acid gene 8 protein homolog
<b>Background</b>	This gene encodes a retinoic acid-responsive protein. A homologous protein in mouse has been shown to be involved in the regulation of meiotic initiation in both spermatogenesis and oogenesis, though feature differences between the mouse and human proteins suggest that these homologs are





not entirely functionally equivalent. It is thought that this gene may play a role in spermatogenesis in humans. [provided by RefSeq, Nov 2010],

Western Blot analysis of NIH-3T3, 293 cells using Stra8 Polyclonal Antibody. Antibody was diluted at 1:1000. Secondary antibody(catalog#:RS0002) was diluted at 1:20000



Immunohistochemical analysis of paraffin-embedded human Gastric adenocarcinoma. 1, Antibody was diluted at 1:200(4° overnight). 2, Tris-EDTA,pH9.0 was used for antigen retrieval. 3,Secondary antibody was diluted at 1:200(room temperature, 45min).

