



SPARC rabbit pAb

Cat No.:ES4251

For research use only

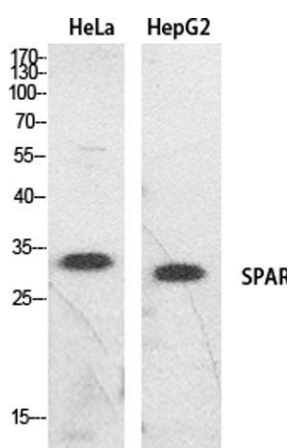
Overview

Product Name	SPARC rabbit pAb
Host species	Rabbit
Applications	WB;IHC;IF;ELISA
Species Cross-Reactivity	Human;Mouse;Rat
Recommended dilutions	Western Blot: 1/500 - 1/2000. IHC-p: 1:100-1:300. ELISA: 1/20000. Not yet tested in other applications.
Immunogen	The antiserum was produced against synthesized peptide derived from the Internal region of human SPARC. AA range:141-190
Specificity	SPARC Polyclonal Antibody detects endogenous levels of SPARC protein.
Formulation	Liquid in PBS containing 50% glycerol, 0.5% BSA and 0.02% sodium azide.
Storage	Store at -20°C. Avoid repeated freeze-thaw cycles.
Protein Name	SPARC
Gene Name	SPARC
Cellular localization	Secreted, extracellular space, extracellular matrix, basement membrane . In or around the basement membrane.
Purification	The antibody was affinity-purified from rabbit antiserum by affinity-chromatography using epitope-specific immunogen.
Clonality	Polyclonal
Concentration	1 mg/ml
Observed band	34kD
Human Gene ID	6678
Human Swiss-Prot Number	P09486
Alternative Names	SPARC; ON; SPARC; Basement-membrane protein 40; BM-40; Osteonectin; ON; Secreted protein acidic and rich in cysteine
Background	This gene encodes a cysteine-rich acidic matrix-associated protein. The encoded protein is required for the collagen in bone to become





calcified but is also involved in extracellular matrix synthesis and promotion of changes to cell shape. The gene product has been associated with tumor suppression but has also been correlated with metastasis based on changes to cell shape which can promote tumor cell invasion. Three transcript variants encoding different isoforms have been found for this gene. [provided by RefSeq, Jun 2015],



Western Blot analysis of HeLa, HepG2 cells using SPARC Polyclonal Antibody. Secondary antibody(catalog#:RS0002) was diluted at 1:20000

Immunohistochemical analysis of paraffin-embedded mouse-muscle, antibody was diluted at 1:100

