



# IL-1F8 rabbit pAb

Cat No.:ES4242

For research use only

## Overview

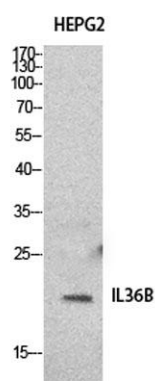
|                                 |   |
|---------------------------------|---|
| <b>Product Name</b>             | IL-1F8 rabbit pAb   |
| <b>Host species</b>             | Rabbit  |
| <b>Applications</b>             | WB;IHC;IF;ELISA   |
| <b>Species Cross-Reactivity</b> | Human;Rat;Mouse;  |
| <b>Recommended dilutions</b>    | Western Blot: 1/500 - 1/2000. IHC-p: 1/100-1/300. ELISA: 1/20000. Not yet tested in other applications.   |
| <b>Immunogen</b>                | The antiserum was produced against synthesized peptide derived from the C-terminal region of human IL36B. AA range:111-160  |
| <b>Specificity</b>              | IL-1F8 Polyclonal Antibody detects endogenous levels of IL-1F8 protein.   |
| <b>Formulation</b>              | Liquid in PBS containing 50% glycerol, 0.5% BSA and 0.02% sodium azide.   |
| <b>Storage</b>                  | Store at -20°C. Avoid repeated freeze-thaw cycles.  |
| <b>Protein Name</b>             | Interleukin-36 beta   |
| <b>Gene Name</b>                | IL36B   |
| <b>Cellular localization</b>    | Cytoplasm . Secreted . The secretion is dependent on protein unfolding and facilitated by the cargo receptor TMED10; it results in protein translocation from the cytoplasm into the ERGIC (endoplasmic reticulum-Golgi intermediate compartment) followed by v |
| <b>Purification</b>             | The antibody was affinity-purified from rabbit antiserum by affinity-chromatography using epitope-specific immunogen.   |
| <b>Clonality</b>                | Polyclonal  |
| <b>Concentration</b>            | 1 mg/ml   |
| <b>Observed band</b>            | 19kD  |
| <b>Human Gene ID</b>            | 27177   |
| <b>Human Swiss-Prot Number</b>  | Q9NZH7  |
| <b>Alternative Names</b>        | IL36B; IL1F8; IL1H2; Interleukin-36 beta; FIL1 eta; Interleukin-1 eta; IL-1 eta; Interleukin-1 family member 8; IL-1F8; Interleukin-1 homolog 2; IL-1H2   |





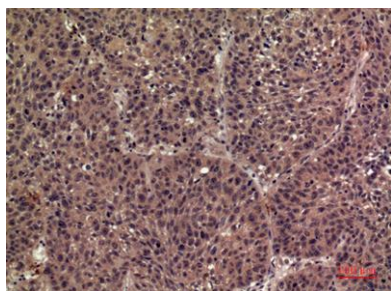
## Background

The protein encoded by this gene is a member of the interleukin 1 cytokine family. Protein structure modeling indicated that this cytokine may contain a 12-stranded beta-trefoil structure that is conserved between IL1A (IL-A alpha) and IL1B (IL-1 beta). This gene and eight other interleukin 1 family genes form a cytokine gene cluster on chromosome 2. Two alternatively spliced transcript variants encoding distinct isoforms have been reported. [provided by RefSeq, Jul 2008],



Western Blot analysis of HepG2 cells using IL-1F8 Polyclonal Antibody. Secondary antibody(catalog#:RS0002) was diluted at 1:20000

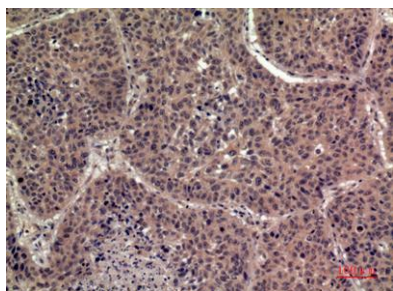
Immunohistochemical analysis of paraffin-embedded human-lung, antibody was diluted at 1:100





**ELK Biotechnology**

Immunohistochemical analysis of paraffin-embedded human-lung, antibody was diluted at 1:100



+86-27-59760950

[ELKbio@ELKbiotech.com](mailto:ELKbio@ELKbiotech.com)

[www.elkbiotech.com](http://www.elkbiotech.com)

23-2, No.388 Gaoxin 2nd Road,Wuhan East Lake Hi-tech Development Zone, Hubei , P.R.C