



UBA1 rabbit pAb

Cat No.:ES4223

For research use only

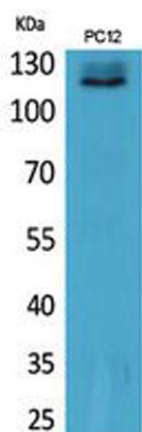
Overview

Product Name	UBA1 rabbit pAb
Host species	Rabbit
Applications	WB;ELISA
Species Cross-Reactivity	Human;Mouse;Rat
Recommended dilutions	Western Blot: 1/500 - 1/2000. ELISA: 1/20000. Not yet tested in other applications.
Immunogen	The antiserum was produced against synthesized peptide derived from the N-terminal region of human UBA1. AA range:91-140
Specificity	UBA1 Polyclonal Antibody detects endogenous levels of UBA1 protein.
Formulation	Liquid in PBS containing 50% glycerol, 0.5% BSA and 0.02% sodium azide.
Storage	Store at -20°C. Avoid repeated freeze-thaw cycles.
Protein Name	Ubiquitin-like modifier-activating enzyme 1
Gene Name	UBA1
Cellular localization	Cytoplasm . Mitochondrion . Nucleus .; [Isoform 1]: Nucleus .; [Isoform 2]: Cytoplasm .
Purification	The antibody was affinity-purified from rabbit antiserum by affinity-chromatography using epitope-specific immunogen.
Clonality	Polyclonal
Concentration	1 mg/ml
Observed band	118kD
Human Gene ID	7317
Human Swiss-Prot Number	P22314
Alternative Names	UBA1; A1S9T; UBE1; Ubiquitin-like modifier-activating enzyme 1; Protein A1S9; Ubiquitin-activating enzyme E1
Background	The protein encoded by this gene catalyzes the first step in ubiquitin conjugation to mark cellular proteins for degradation. This gene complements an X-linked mouse temperature-sensitive defect in DNA





synthesis, and thus may function in DNA repair. It is part of a gene cluster on chromosome Xp11.23. Alternatively spliced transcript variants that encode the same protein have been described. [provided by RefSeq, Jul 2008],



Western Blot analysis of PC12 cells using UBA1 Polyclonal Antibody. Secondary antibody(catalog#:RS0002) was diluted at 1:20000

