



CD223 rabbit pAb

Cat No.:ES4210

For research use only

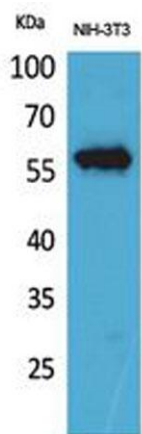
Overview

Product Name	CD223 rabbit pAb
Host species	Rabbit
Applications	WB;ELISA
Species Cross-Reactivity	Human;Rat;Mouse;
Recommended dilutions	Western Blot: 1/500 - 1/2000. ELISA: 1/20000. Not yet tested in other applications.
Immunogen	The antiserum was produced against synthesized peptide derived from the Internal region of human LAG3. AA range:91-140
Specificity	CD223 Polyclonal Antibody detects endogenous levels of CD223 protein.
Formulation	Liquid in PBS containing 50% glycerol, 0.5% BSA and 0.02% sodium azide.
Storage	Store at -20°C. Avoid repeated freeze-thaw cycles.
Protein Name	Lymphocyte activation gene 3 protein
Gene Name	LAG3
Cellular localization	[Lymphocyte activation gene 3 protein]: Cell membrane ; Single-pass type I membrane protein ; [Secreted lymphocyte activation gene 3 protein]: Secreted . Produced following cleavage of the main chain. .
Purification	The antibody was affinity-purified from rabbit antiserum by affinity-chromatography using epitope-specific immunogen.
Clonality	Polyclonal
Concentration	1 mg/ml
Observed band	57kD
Human Gene ID	3902
Human Swiss-Prot Number	P18627
Alternative Names	LAG3; FDC; Lymphocyte activation gene 3 protein; LAG-3; Protein FDC; CD223
Background	Lymphocyte-activation protein 3 belongs to Ig superfamily and contains 4 extracellular Ig-like





domains. The LAG3 gene contains 8 exons. The sequence data, exon/intron organization, and chromosomal localization all indicate a close relationship of LAG3 to CD4. [provided by RefSeq, Jul 2008],



Western Blot analysis of NIH-3T3 cells using CD223 Polyclonal Antibody. Secondary antibody(catalog#:RS0002) was diluted at 1:20000

