

# EMMPRIN rabbit pAb

Cat No.:ES4201

For research use only

## Overview

|                          |   |
|--------------------------|---|
| Product Name             | EMMPRIN rabbit pAb  |
| Host species             | Rabbit  |
| Applications             | WB;IHC;IF;ELISA   |
| Species Cross-Reactivity | Human;Rat;Mouse;  |
| Recommended dilutions    | Western Blot: 1/500 - 1/2000. IHC-p: 1/100-1/300.<br>ELISA: 1/20000. Not yet tested in other applications.  |
| Immunogen                | The antiserum was produced against synthesized peptide derived from the Internal region of human BSG. AA range:221-270  |
| Specificity              | EMMPRIN Polyclonal Antibody detects endogenous levels of EMMPRIN protein.   |
| Formulation              | Liquid in PBS containing 50% glycerol, 0.5% BSA and 0.02% sodium azide.   |
| Storage                  | Store at -20°C. Avoid repeated freeze-thaw cycles.  |
| Protein Name             | Basigin   |
| Gene Name                | BSG   |
| Cellular localization    | Melanosome . Identified by mass spectrometry in melanosome fractions from stage I to stage IV. .; [Isoform 1]: Cell membrane ; Single-pass type I membrane protein . Photoreceptor inner segment . Cell projection, cilium, photoreceptor outer segment .; [Isoform 2]: Cell membrane ; Single-pass type I membrane protein . Endosome . Endoplasmic reticulum membrane ; Single-pass type I membrane protein . Basolateral cell membrane ; Single-pass type I membrane protein .; [Isoform 3]: Cell membrane ; Single-pass type I membrane protein .; [Isoform 4]: Cell membrane ; Single-pass type I membrane protein . |
| Purification             | The antibody was affinity-purified from rabbit antiserum by affinity-chromatography using epitope-specific immunogen.   |
| Clonality                | Polyclonal  |

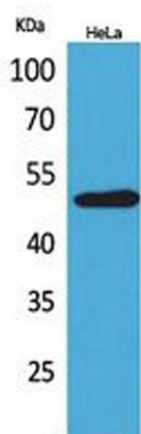




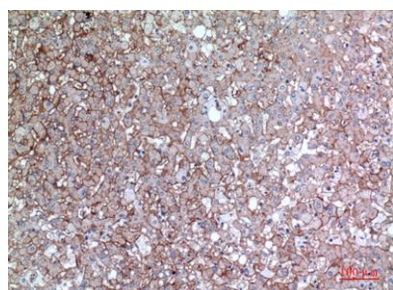
|                                |   |
|--------------------------------|---|
| <b>Concentration</b>           | 1 mg/ml   |
| <b>Observed band</b>           | 50kD  |
| <b>Human Gene ID</b>           | 682   |
| <b>Human Swiss-Prot Number</b> | P35613  |
| <b>Alternative Names</b>       | BSG; Basigin; 5F7; Collagenase stimulatory factor; Extracellular matrix metalloproteinase inducer; EMMPRIN; Leukocyte activation antigen M6; OK blood group antigen; Tumor cell-derived collagenase stimulatory factor; TCSF; CD147 |

#### Background

The protein encoded by this gene is a plasma membrane protein that is important in spermatogenesis, embryo implantation, neural network formation, and tumor progression. The encoded protein is also a member of the immunoglobulin superfamily. Multiple transcript variants encoding different isoforms have been found for this gene. [provided by RefSeq, Jul 2008],



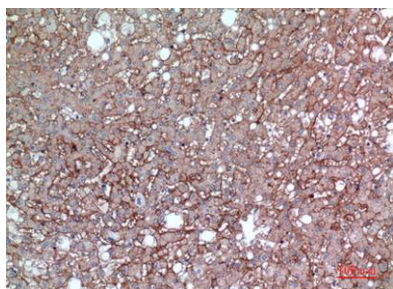
Western Blot analysis of HeLa cells using EMMPRIN Polyclonal Antibody. Secondary antibody(catalog#:RS0002) was diluted at 1:20000



Immunohistochemical analysis of paraffin-embedded human-liver, antibody was diluted at 1:100



Immunohistochemical analysis of paraffin-embedded human-liver, antibody was diluted at 1:100



Immunohistochemical analysis of paraffin-embedded Human Liver. 1, Antibody was diluted at 1:100(4° overnight). 2, High-pressure and temperature EDTA, pH8.0 was used for antigen retrieval. 3, Secondary antibody was diluted at 1:200(room temperature, 30min).

