



# CD37 rabbit pAb

Cat No.:ES4192

For research use only

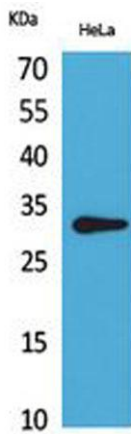
## Overview

|                                 |   |
|---------------------------------|---|
| <b>Product Name</b>             | CD37 rabbit pAb   |
| <b>Host species</b>             | Rabbit  |
| <b>Applications</b>             | WB;IHC;IF;ELISA   |
| <b>Species Cross-Reactivity</b> | Human;Rat;Mouse;  |
| <b>Recommended dilutions</b>    | Western Blot: 1/500 - 1/2000. IHC-p: 1/100-1/300. ELISA: 1/20000. Not yet tested in other applications.   |
| <b>Immunogen</b>                | The antiserum was produced against synthesized peptide derived from the Internal region of human CD37. AA range:81-130  |
| <b>Specificity</b>              | CD37 Polyclonal Antibody detects endogenous levels of CD37 protein.   |
| <b>Formulation</b>              | Liquid in PBS containing 50% glycerol, 0.5% BSA and 0.02% sodium azide.   |
| <b>Storage</b>                  | Store at -20°C. Avoid repeated freeze-thaw cycles.  |
| <b>Protein Name</b>             | Leukocyte antigen CD37  |
| <b>Gene Name</b>                | CD37  |
| <b>Cellular localization</b>    | Membrane; Multi-pass membrane protein.  |
| <b>Purification</b>             | The antibody was affinity-purified from rabbit antiserum by affinity-chromatography using epitope-specific immunogen.   |
| <b>Clonality</b>                | Polyclonal  |
| <b>Concentration</b>            | 1 mg/ml   |
| <b>Observed band</b>            | 30kD  |
| <b>Human Gene ID</b>            | 951   |
| <b>Human Swiss-Prot Number</b>  | P11049  |
| <b>Alternative Names</b>        | CD37; TSPAN26; Leukocyte antigen CD37; Tetraspanin-26; Tspan-26; CD37   |
| <b>Background</b>               | The protein encoded by this gene is a member of the transmembrane 4 superfamily, also known as the tetraspanin family. Most of these members are cell-surface proteins that are characterized by the presence of four hydrophobic domains. The proteins mediate signal transduction events that play a role |





in the regulation of cell development, activation, growth and motility. This encoded protein is a cell surface glycoprotein that is known to complex with integrins and other transmembrane 4 superfamily proteins. It may play a role in T-cell-B-cell interactions. Alternate splicing results in multiple transcript variants encoding different isoforms. [provided by RefSeq, Jul 2008],



Western Blot analysis of HeLa cells using CD37 Polyclonal Antibody. Secondary antibody(catalog#:RS0002) was diluted at 1:20000

Immunohistochemical analysis of paraffin-embedded human-liver, antibody was diluted at 1:100

