

Integrin α D rabbit pAb

Cat No.:ES4190

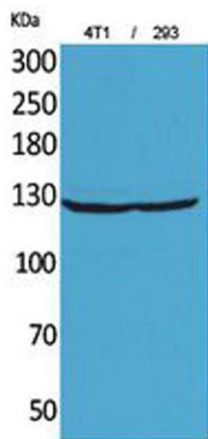
For research use only

Overview

Product Name	Integrin α D rabbit pAb
Host species	Rabbit
Applications	WB;IHC;IF;ELISA
Species Cross-Reactivity	Human;Rat;Mouse;
Recommended dilutions	Western Blot: 1/500 - 1/2000. IHC-p: 1/100-1/300. ELISA: 1/20000. Not yet tested in other applications.
Immunogen	The antiserum was produced against synthesized peptide derived from the Internal region of human ITGAD. AA range:901-950
Specificity	Integrin α D Polyclonal Antibody detects endogenous levels of Integrin α D protein.
Formulation	Liquid in PBS containing 50% glycerol, 0.5% BSA and 0.02% sodium azide.
Storage	Store at -20°C. Avoid repeated freeze-thaw cycles.
Protein Name	Integrin alpha-D
Gene Name	ITGAD
Cellular localization	Membrane; Single-pass type I membrane protein.
Purification	The antibody was affinity-purified from rabbit antiserum by affinity-chromatography using epitope-specific immunogen.
Clonality	Polyclonal
Concentration	1 mg/ml
Observed band	127kD
Human Gene ID	3681
Human Swiss-Prot Number	Q13349
Alternative Names	ITGAD; Integrin alpha-D; ADB2; CD11 antigen-like family member D; Leukointegrin alpha D; CD11d integrin subunit alpha D(ITGAD) Homo sapiens
Background	This gene belongs to the beta-2 integrin family of membrane glycoproteins, which are composed of non-covalently linked alpha and beta subunits to form a heterodimer. It encodes the alpha subunit of the cell surface heterodimers and is involved in the

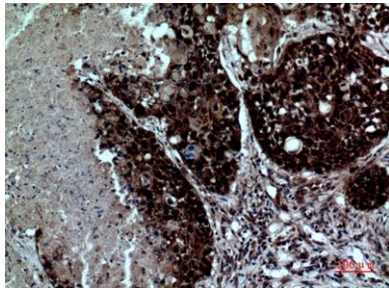


activation and adhesion functions of leukocytes. The gene is located about 11kb downstream of the integrin subunit alpha X gene, another member of the integrin family. It is expressed in the tissue and circulating myeloid leukocytes. Alternative splicing results in multiple transcript variants. [provided by RefSeq, Dec 2015],

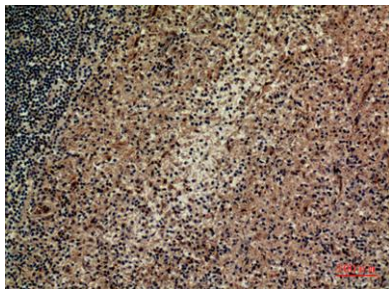


Western Blot analysis of 4T1, 293 cells using Integrin α D Polyclonal Antibody. Secondary antibody(catalog#:RS0002) was diluted at 1:20000

Immunohistochemical analysis of paraffin-embedded human-lung, antibody was diluted at 1:100

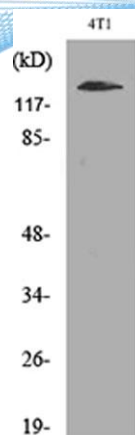


Immunohistochemical analysis of paraffin-embedded human-spleen, antibody was diluted at 1:100





ELK Biotechnology



Western blot analysis of lysate from 4T1 cells, using ITGAD Antibody.



+86-27-59760950

ELKbio@ELKbiotech.com

www.elkbiotech.com

23-2, No.388 Gaoxin 2nd Road,Wuhan East Lake Hi-tech Development Zone, Hubei , P.R.C