

# Rab 5A rabbit pAb

Cat No.:ES4186

For research use only

## Overview

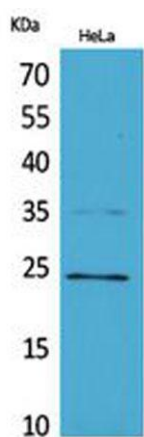
Product Name	Rab 5A rabbit pAb
Host species	Rabbit
Applications	WB;IHC;IF;ELISA
Species Cross-Reactivity	Human;Mouse;Rat
Recommended dilutions	Western Blot: 1/500 - 1/2000. IHC-p: 1/100-1/300. ELISA: 1/20000. Not yet tested in other applications.
Immunogen	The antiserum was produced against synthesized peptide derived from the Internal region of human RAB5A. AA range:71-120
Specificity	Rab 5A Polyclonal Antibody detects endogenous levels of Rab 5A protein.
Formulation	Liquid in PBS containing 50% glycerol, 0.5% BSA and 0.02% sodium azide.
Storage	Store at -20°C. Avoid repeated freeze-thaw cycles.
Protein Name	Ras-related protein Rab-5A
Gene Name	RAB5A
Cellular localization	Cell membrane ; Lipid-anchor ; Cytoplasmic side . Early endosome membrane ; Lipid-anchor . Melanosome . Cytoplasmic vesicle . Cell projection, ruffle . Membrane . Cytoplasm, cytosol . Cytoplasmic vesicle, phagosome membrane . Endosome membrane . Enriched in stage I melanosomes (PubMed:17081065). Alternates between membrane-bound and cytosolic forms (Probable). .
Purification	The antibody was affinity-purified from rabbit antiserum by affinity-chromatography using epitope-specific immunogen.
Clonality	Polyclonal
Concentration	1 mg/ml
Observed band	24kD
Human Gene ID	5868
Human Swiss-Prot Number	P20339



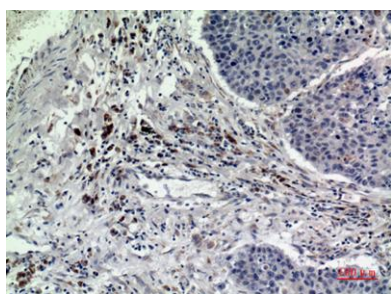


## Alternative Names Background

RAB5A; RAB5; Ras-related protein Rab-5A  
enzyme regulation: Regulated by guanine nucleotide exchange factors (GEFs) which promote the exchange of bound GDP for free GTP., function: Required for the fusion of plasma membranes and early endosomes., similarity: Belongs to the small GTPase superfamily. Rab family., subcellular location: Enriched in stage I melanosomes., subunit: Binds EEA1. Interacts with RIN1 and GAPVD1, which regulate its pathway, probably by acting as a GEF. Interacts with ALS2CL, UNC84B, ZFYVE20 and RUFY1. Interacts with SGSM1 and SGSM3.,



Western Blot analysis of HeLa cells using Rab 5A Polyclonal Antibody. Secondary antibody (catalog#: RS0002) was diluted at 1:20000



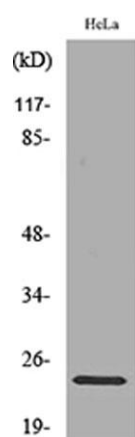
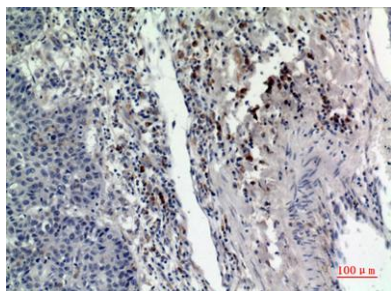
Immunohistochemical analysis of paraffin-embedded human lung, antibody was diluted at 1:100





**ELK Biotechnology**

Immunohistochemical analysis of paraffin-embedded human-lung, antibody was diluted at 1:100



Western blot analysis of lysate from HeLa cells, using RAB5A Antibody.



+86-27-59760950

[ELKbio@ELKbiotech.com](mailto:ELKbio@ELKbiotech.com)

[www.elkbiotech.com](http://www.elkbiotech.com)

23-2, No.388 Gaoxin 2nd Road, Wuhan East Lake Hi-tech Development Zone, Hubei, P.R.C.