



# EP1 rabbit pAb

Cat No.:ES4177

For research use only

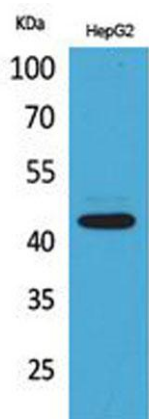
## Overview

Product Name	EP1 rabbit pAb
Host species	Rabbit
Applications	WB;ELISA
Species Cross-Reactivity	Human;Rat;Mouse;
Recommended dilutions	Western Blot: 1/500 - 1/2000. ELISA: 1/20000. Not yet tested in other applications.
Immunogen	The antiserum was produced against synthesized peptide derived from the Internal region of human PTGER1. AA range:191-240
Specificity	EP1 Polyclonal Antibody detects endogenous levels of EP1 protein.
Formulation	Liquid in PBS containing 50% glycerol, 0.5% BSA and 0.02% sodium azide.
Storage	Store at -20°C. Avoid repeated freeze-thaw cycles.
Protein Name	Prostaglandin E2 receptor EP1 subtype
Gene Name	PTGER1
Cellular localization	Cell membrane; Multi-pass membrane protein.
Purification	The antibody was affinity-purified from rabbit antiserum by affinity-chromatography using epitope-specific immunogen.
Clonality	Polyclonal
Concentration	1 mg/ml
Observed band	44kD
Human Gene ID	5731
Human Swiss-Prot Number	P34995
Alternative Names	PTGER1; Prostaglandin E2 receptor EP1 subtype; PGE receptor EP1 subtype; PGE2 receptor EP1 subtype; Prostanoid EP1 receptor
Background	The protein encoded by this gene is a member of the G protein-coupled receptor family. This protein is one of four receptors identified for prostaglandin E2 (PGE2). Through a phosphatidylinositol-calcium second messenger system, G-Q proteins mediate





this receptor's activity. Knockout studies in mice suggested a role of this receptor in mediating algesia and in regulation of blood pressure. Studies in mice also suggested that this gene may mediate adrenocorticotrophic hormone response to bacterial endotoxin. [provided by RefSeq, Jul 2008],



Western Blot analysis of HepG2 cells using EP1 Polyclonal Antibody. Secondary antibody(catalog#:RS0002) was diluted at 1:20000

