



# CyPB rabbit pAb

Cat No.:ES4166

For research use only

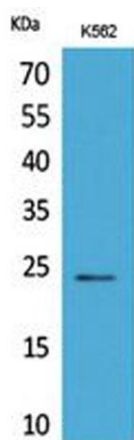
## Overview

<b>Product Name</b>	CyPB rabbit pAb
<b>Host species</b>	Rabbit
<b>Applications</b>	WB;ELISA
<b>Species Cross-Reactivity</b>	Human;Mouse;Rat
<b>Recommended dilutions</b>	Western Blot: 1/500 - 1/2000. ELISA: 1/20000. Not yet tested in other applications.
<b>Immunogen</b>	The antiserum was produced against synthesized peptide derived from the C-terminal region of human PPIB. AA range:151-200
<b>Specificity</b>	CyPB Polyclonal Antibody detects endogenous levels of CyPB protein.
<b>Formulation</b>	Liquid in PBS containing 50% glycerol, 0.5% BSA and 0.02% sodium azide.
<b>Storage</b>	Store at -20°C. Avoid repeated freeze-thaw cycles.
<b>Protein Name</b>	Peptidyl-prolyl cis-trans isomerase B
<b>Gene Name</b>	PPIB
<b>Cellular localization</b>	Virion . (Microbial infection).; Endoplasmic reticulum lumen . Melanosome . Identified by mass spectrometry in melanosome fractions from stage I to stage IV (PubMed:17081065). .
<b>Purification</b>	The antibody was affinity-purified from rabbit antiserum by affinity-chromatography using epitope-specific immunogen.
<b>Clonality</b>	Polyclonal
<b>Concentration</b>	1 mg/ml
<b>Observed band</b>	24kD
<b>Human Gene ID</b>	5479
<b>Human Swiss-Prot Number</b>	P23284
<b>Alternative Names</b>	PPIB; CYPB; Peptidyl-prolyl cis-trans isomerase B; PPlase B; CYP-S1; Cyclophilin B; Rotamase B; S-cyclophilin; SCYLP
<b>Background</b>	The protein encoded by this gene is a cyclosporine-binding protein and is mainly located





within the endoplasmic reticulum. It is associated with the secretory pathway and released in biological fluids. This protein can bind to cells derived from T- and B-lymphocytes, and may regulate cyclosporine A-mediated immunosuppression. Variants have been identified in this protein that give rise to recessive forms of osteogenesis imperfecta. [provided by RefSeq, Oct 2009],



Western Blot analysis of K562 cells using CyPB Polyclonal Antibody. Secondary antibody(catalog#:RS0002) was diluted at 1:20000

