



MYH-pan rabbit pAb

Cat No.:ES4157

For research use only

Overview

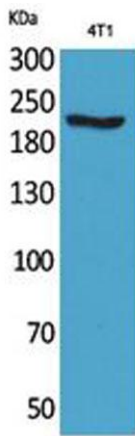
Product Name	MYH-pan rabbit pAb
Host species	Rabbit
Applications	WB;IHC;IF;ELISA
Species	Human;Mouse;Rat
Cross-Reactivity	
Recommended dilutions	Western Blot: 1/500 - 1/2000. IHC-p: 1/100-1/300. ELISA: 1/20000. Not yet tested in other applications.
Immunogen	The antiserum was produced against synthesized peptide derived from human MYH-pan around the non-acetylation site of Lys1394. AA range:1351-1400
Specificity	MYH-pan Polyclonal Antibody detects endogenous levels of MYH-pan protein only when acetylation at K1394.
Formulation	Liquid in PBS containing 50% glycerol, 0.5% BSA and 0.02% sodium azide.
Storage	Store at -20°C. Avoid repeated freeze-thaw cycles.
Protein Name	Myosin-1/Myosin-2/Myosin-3/Receptor-type tyrosine-protein phosphatase eta/Myosin-6/Myosin-7/Myosin-8
Gene Name	MYH1/MYH2/MYH3/PTPRJ/MYH6/MYH7/MYH8
Cellular localization	Cytoplasm, myofibril. Thick filaments of the myofibrils.
Purification	The antibody was affinity-purified from rabbit antiserum by affinity-chromatography using epitope-specific immunogen.
Clonality	Polyclonal
Concentration	1 mg/ml
Observed band	225kD
Human Gene ID	4619/4620/4621/5795/4624/4625/4626
Human Swiss-Prot Number	P12882/Q9UKX2/P11055/Q9Y623/P13533/P12883/P13535
Alternative Names	MYH1; Myosin-1; Myosin heavy chain 1; Myosin heavy chain 2x; MyHC-2x; Myosin heavy chain IIx/d; MyHC-IIx/d; Myosin heavy chain, skeletal muscle, adult 1; MYH2; MYHSA2; Myosin-2; Myosin heavy chain 2Myosin heavy





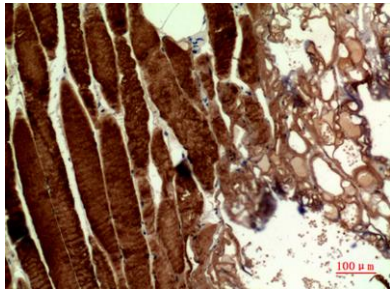
Background

chain 2; Myosin heavy chain 2a; MyHC-2a; Myo
Myosin is a major contractile protein which converts chemical energy into mechanical energy through the hydrolysis of ATP. Myosin is a hexameric protein composed of a pair of myosin heavy chains (MYH) and two pairs of nonidentical light chains. Myosin heavy chains are encoded by a multigene family. In mammals at least 10 different myosin heavy chain (MYH) isoforms have been described from striated, smooth, and nonmuscle cells. These isoforms show expression that is spatially and temporally regulated during development. [provided by RefSeq, Jul 2008],



Western Blot analysis of 4T1 cells using MYH-pan Polyclonal Antibody. Secondary antibody(catalog#:RS0002) was diluted at 1:20000

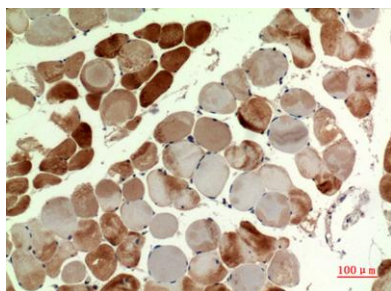
Immunohistochemical analysis of paraffin-embedded human-muscle, antibody was diluted at 1:100



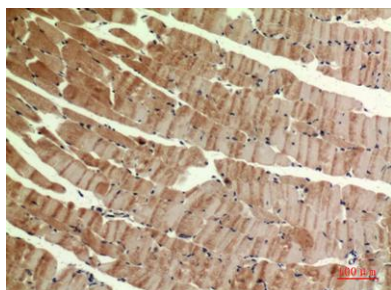


ELK Biotechnology

Immunohistochemical analysis of paraffin-embedded human-muscle, antibody was diluted at 1:100



Immunohistochemical analysis of paraffin-embedded mouse-muscle, antibody was diluted at 1:100



+86-27-59760950

ELKbio@ELKbiotech.com

www.elkbiotech.com

23-2, No.388 Gaoxin 2nd Road, Wuhan East Lake Hi-tech Development Zone, Hubei, P.R.C