

HSP70 rabbit pAb

Cat No.:ES4154

For research use only

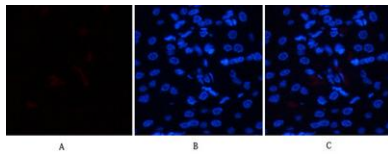
Overview

| | |
|--------------------------|---|
| Product Name | HSP70 rabbit pAb |
| Host species | Rabbit |
| Applications | IF;WB;IHC;ELISA |
| Species Cross-Reactivity | Human;Rat;Mouse; |
| Recommended dilutions | IF: 1:50-200 Western Blot: 1/500 - 1/2000. IHC-p: 1/100-1/300. ELISA: 1/20000. Not yet tested in other applications. |
| Immunogen | Synthesized peptide derived from human HSP70 around the non-acetylation site of K246. |
| Specificity | HSP70 Polyclonal Antibody detects endogenous levels of HSP70 protein |
| Formulation | Liquid in PBS containing 50% glycerol, 0.5% BSA and 0.02% sodium azide. |
| Storage | Store at -20°C. Avoid repeated freeze-thaw cycles. |
| Protein Name | Heat shock 70 kDa protein 1A/1B |
| Gene Name | HSPA1A |
| Cellular localization | Cytoplasm . Nucleus . Cytoplasm, cytoskeleton, microtubule organizing center, centrosome . Secreted . Localized in cytoplasmic mRNP granules containing untranslated mRNAs. |
| Purification | The antibody was affinity-purified from rabbit antiserum by affinity-chromatography using epitope-specific immunogen. |
| Clonality | Polyclonal |
| Concentration | 1 mg/ml |
| Observed band | 70kD |
| Human Gene ID | 3303/3304 |
| Human Swiss-Prot Number | P0DMV8/P0DMV9 |
| Alternative Names | HSPA1A; HSPA1; HSPA1B; Heat shock 70 kDa protein 1A/1B; Heat shock 70 kDa protein 1/2; HSP70-1/HSP70-2; HSP70.1/HSP70.2 |
| Background | This intronless gene encodes a 70kDa heat shock protein which is a member of the heat shock protein |

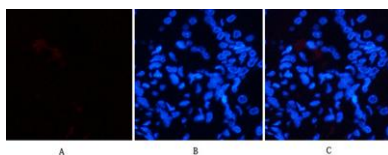


70 family. In conjunction with other heat shock proteins, this protein stabilizes existing proteins against aggregation and mediates the folding of newly translated proteins in the cytosol and in organelles. It is also involved in the ubiquitin-proteasome pathway through interaction with the AU-rich element RNA-binding protein 1. The gene is located in the major histocompatibility complex class III region, in a cluster with two closely related genes which encode similar proteins. [provided by RefSeq, Jul 2008],

Immunofluorescence analysis of human-kidney tissue.
1,HSP70 Polyclonal Antibody(red) was diluted at 1:200(4°C,overnight). 2, Cy3 labeled Secondary antibody was diluted at 1:300(room temperature, 50min).3, Picture B: DAPI(blue) 10min. Picture A:Target. Pict

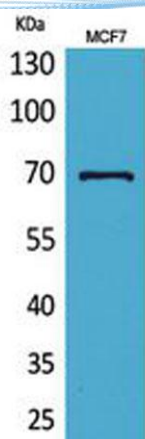


Immunofluorescence analysis of human-kidney tissue.
1,HSP70 Polyclonal Antibody(red) was diluted at 1:200(4°C,overnight). 2, Cy3 labeled Secondary antibody was diluted at 1:300(room temperature, 50min).3, Picture B: DAPI(blue) 10min. Picture A:Target. Picture B: DAPI. Picture C: merge of A+B

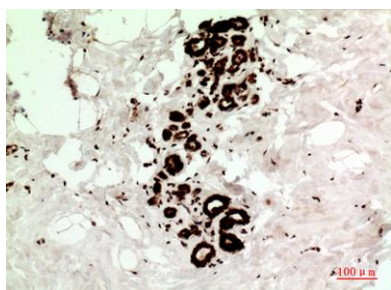




ELK Biotechnology



Western Blot analysis of MCF7 cells using HSP70 Polyclonal Antibody. Secondary antibody(catalog#:RS0002) was diluted at 1:20000



Immunohistochemical analysis of paraffin-embedded human-Breast-cancer, antibody was diluted at 1:100



+86-27-59760950

ELKbio@ELKbiotech.com

www.elkbiotech.com

23-2, No.388 Gaoxin 2nd Road,Wuhan East Lake Hi-tech Development Zone, Hubei , P.R.C