

Inhibin β -A rabbit pAb

Cat No.:ES4139

For research use only

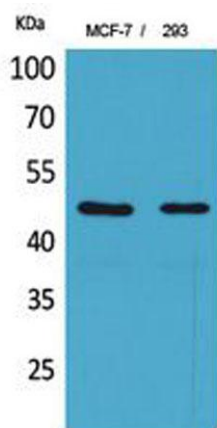
Overview

Product Name	Inhibin β -A rabbit pAb
Host species	Rabbit
Applications	WB;IHC;IF;ELISA
Species Cross-Reactivity	Human;Mouse;Rat
Recommended dilutions	Western Blot: 1/500 - 1/2000. IHC-p: 1/100-1/300. ELISA: 1/20000. Not yet tested in other applications.
Immunogen	The antiserum was produced against synthesized peptide derived from the C-terminal region of human INHBA. AA range:377-426
Specificity	Inhibin β -A Polyclonal Antibody detects endogenous levels of Inhibin β -A protein.
Formulation	Liquid in PBS containing 50% glycerol, 0.5% BSA and 0.02% sodium azide.
Storage	Store at -20°C. Avoid repeated freeze-thaw cycles.
Protein Name	Inhibin beta A chain
Gene Name	INHBA
Cellular localization	Secreted.
Purification	The antibody was affinity-purified from rabbit antiserum by affinity-chromatography using epitope-specific immunogen.
Clonality	Polyclonal
Concentration	1 mg/ml
Observed band	52kD
Human Gene ID	3624
Human Swiss-Prot Number	P08476
Alternative Names	INHBA; Inhibin beta A chain; Activin beta-A chain; Erythroid differentiation protein; EDF
Background	This gene encodes a member of the TGF-beta (transforming growth factor-beta) superfamily of proteins. The encoded preproprotein is proteolytically processed to generate a subunit of the dimeric activin and inhibin protein complexes. These complexes activate and inhibit, respectively,



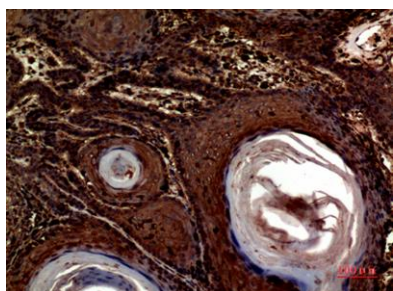


follicle stimulating hormone secretion from the pituitary gland. The encoded protein also plays a role in eye, tooth and testis development. Elevated expression of this gene may be associated with cancer cachexia in human patients. [provided by RefSeq, Aug 2016],

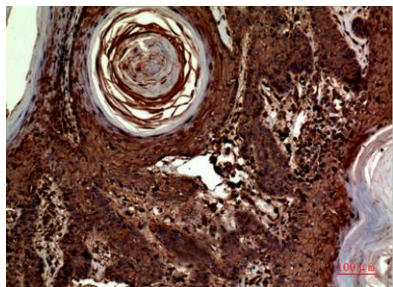


Western Blot analysis of MCF-7, 293 cells using Inhibin β -A Polyclonal Antibody. Secondary antibody(catalog#:RS0002) was diluted at 1:20000

Immunohistochemical analysis of paraffin-embedded human-skin, antibody was diluted at 1:100

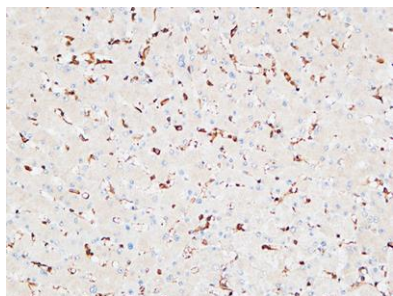


Immunohistochemical analysis of paraffin-embedded human-skin, antibody was diluted at 1:100





ELK Biotechnology



Immunohistochemical analysis of paraffin-embedded Human liver. 1, Antibody was diluted at 1:200(4° overnight). 2, High-pressure and temperature EDTA, pH8.0 was used for antigen retrieval. 3, Secondary antibody was diluted at 1:200(room temperature, 30min).



+86-27-59760950

ELKbio@ELKbiotech.com

www.elkbiotech.com

23-2, No.388 Gaoxin 2nd Road, Wuhan East Lake Hi-tech Development Zone, Hubei, P.R.C