



CD163b rabbit pAb

Cat No.:ES4136

For research use only

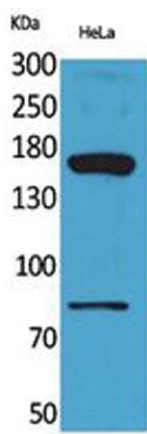
Overview

Product Name	CD163b rabbit pAb
Host species	Rabbit
Applications	WB;IHC;IF;ELISA
Species Cross-Reactivity	Human;Rat;Mouse;
Recommended dilutions	Western Blot: 1/500 - 1/2000. IHC-p: 1/100-1/300. ELISA: 1/20000. Not yet tested in other applications.
Immunogen	The antiserum was produced against synthesized peptide derived from the Internal region of human CD163L1. AA range:391-440
Specificity	CD163b Polyclonal Antibody detects endogenous levels of CD163b protein.
Formulation	Liquid in PBS containing 50% glycerol, 0.5% BSA and 0.02% sodium azide.
Storage	Store at -20°C. Avoid repeated freeze-thaw cycles.
Protein Name	Scavenger receptor cysteine-rich type 1 protein M160
Gene Name	CD163L1
Cellular localization	[Isoform 1]: Cell membrane ; Single-pass type I membrane protein .; [Isoform 2]: Cell membrane ; Single-pass type I membrane protein .; [Isoform 3]: Secreted .
Purification	The antibody was affinity-purified from rabbit antiserum by affinity-chromatography using epitope-specific immunogen.
Clonality	Polyclonal
Concentration	1 mg/ml
Observed band	160kD
Human Gene ID	283316
Human Swiss-Prot Number	Q9NR16
Alternative Names	CD163L1; CD163B; M160; Scavenger receptor cysteine-rich type 1 protein M160; CD163 antigen-like 1; CD163b
Background	This gene encodes a member of the scavenger

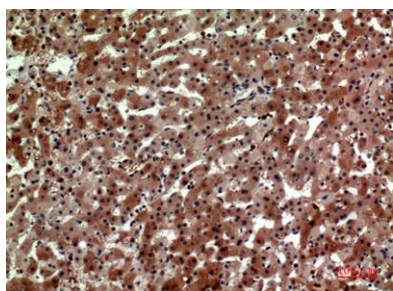




receptor cysteine-rich (SRCR) superfamily. Members of this family are secreted or membrane-anchored proteins mainly found in cells associated with the immune system. The SRCR family is defined by a 100-110 amino acid SRCR domain, which may mediate protein-protein interaction and ligand binding. The encoded protein contains twelve SRCR domains, a transmembrane region and a cytoplasmic domain. Alternative splicing results in multiple transcript variants encoding different isoforms. [provided by RefSeq, Jul 2014],



Western Blot analysis of HeLa cells using CD163b Polyclonal Antibody. Secondary antibody(catalog#:RS0002) was diluted at 1:20000



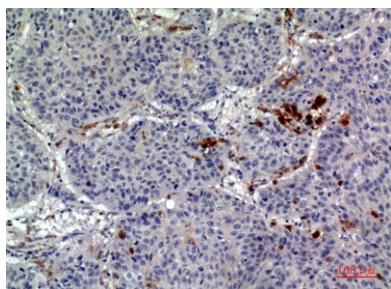
Immunohistochemical analysis of paraffin-embedded human-liver, antibody was diluted at 1:100



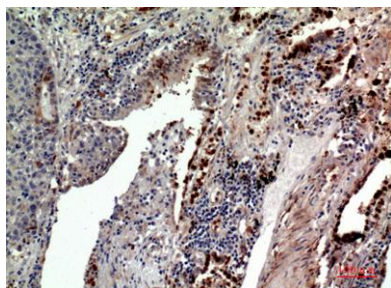


ELK Biotechnology

Immunohistochemical analysis of paraffin-embedded human-lung, antibody was diluted at 1:100



Immunohistochemical analysis of paraffin-embedded human-lung, antibody was diluted at 1:100



+86-27-59760950

ELKbio@ELKbiotech.com

www.elkbiotech.com

23-2, No.388 Gaoxin 2nd Road,Wuhan East Lake Hi-tech Development Zone, Hubei , P.R.C