



Glut5 rabbit pAb

Cat No.:ES4118

For research use only

Overview

Product Name	Glut5 rabbit pAb
Host species	Rabbit
Applications	WB;ELISA
Species Cross-Reactivity	Human;Rat;Mouse;
Recommended dilutions	Western Blot: 1/500 - 1/2000. ELISA: 1/20000. Not yet tested in other applications.
Immunogen	The antiserum was produced against synthesized peptide derived from the N-terminal region of human SLC2A5. AA range:31-80
Specificity	Glut5 Polyclonal Antibody detects endogenous levels of Glut5 protein.
Formulation	Liquid in PBS containing 50% glycerol, 0.5% BSA and 0.02% sodium azide.
Storage	Store at -20°C. Avoid repeated freeze-thaw cycles.
Protein Name	Solute carrier family 2 facilitated glucose transporter member 5
Gene Name	SLC2A5
Cellular localization	Apical cell membrane ; Multi-pass membrane protein . Cell membrane ; Multi-pass membrane protein . Cell membrane, sarcolemma . Localized on the apical membrane of jejunum villi, but also on lateral plasma membranes of the villi. Transport to the cell memb
Purification	The antibody was affinity-purified from rabbit antiserum by affinity-chromatography using epitope-specific immunogen.
Clonality	Polyclonal
Concentration	1 mg/ml
Observed band	55kD
Human Gene ID	6518
Human Swiss-Prot Number	P22732
Alternative Names	SLC2A5; GLUT5; Solute carrier family 2, facilitated glucose transporter member 5; Fructose

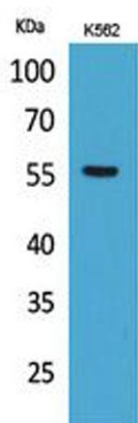




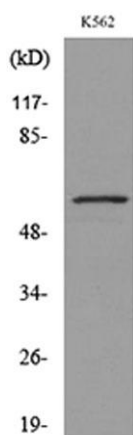
Background

transporter; Glucose transporter type 5, small intestine; GLUT-5

The protein encoded by this gene is a fructose transporter responsible for fructose uptake by the small intestine. The encoded protein also is necessary for the increase in blood pressure due to high dietary fructose consumption. [provided by RefSeq, Jun 2016],



Western Blot analysis of K562 cells using Glut5 Polyclonal Antibody. Secondary antibody(catalog#:RS0002) was diluted at 1:20000



Western blot analysis of lysate from K562 cells, using SLC2A5 Antibody.

