

CGREF1 rabbit pAb

Cat No.:ES4106

For research use only

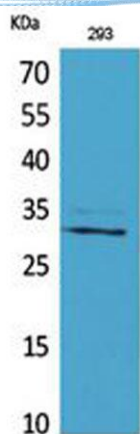
Overview

Product Name	CGREF1 rabbit pAb
Host species	Rabbit
Applications	WB;IHC;IF;ELISA
Species Cross-Reactivity	Human;Rat;Mouse;
Recommended dilutions	Western Blot: 1/500 - 1/2000. IHC-p: 1/100-1/300. ELISA: 1/20000. Not yet tested in other applications.
Immunogen	The antiserum was produced against synthesized peptide derived from the N-terminal region of human CGREF1. AA range:1-50
Specificity	CGREF1 Polyclonal Antibody detects endogenous levels of CGREF1 protein.
Formulation	Liquid in PBS containing 50% glycerol, 0.5% BSA and 0.02% sodium azide.
Storage	Store at -20°C. Avoid repeated freeze-thaw cycles.
Protein Name	Cell growth regulator with EF hand domain protein 1
Gene Name	CGREF1
Cellular localization	Secreted .
Purification	The antibody was affinity-purified from rabbit antiserum by affinity-chromatography using epitope-specific immunogen.
Clonality	Polyclonal
Concentration	1 mg/ml
Observed band	32kD
Human Gene ID	10669
Human Swiss-Prot Number	Q99674
Alternative Names	CGREF1; CGR11; Cell growth regulator with EF hand domain protein 1; Cell growth regulatory gene 11 protein; Hydrophobestin
Background	caution:The sequence shown here is derived from an Ensembl automatic analysis pipeline and should be considered as preliminary data.,function:Able to inhibit growth in several cell lines.,induction:By p53.,similarity:Contains 2 EF-hand domains.,



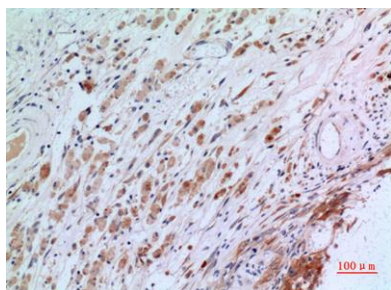


ELK Biotechnology

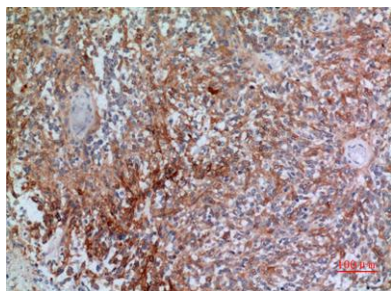


Western Blot analysis of 293 cells using CGREF1 Polyclonal Antibody. Secondary antibody(catalog#:RS0002) was diluted at 1:20000

Immunohistochemical analysis of paraffin-embedded human-brain, antibody was diluted at 1:100



Immunohistochemical analysis of paraffin-embedded human-brain, antibody was diluted at 1:100



+86-27-59760950

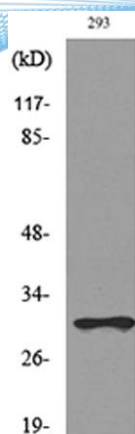
ELKbio@ELKbiotech.com

www.elkbiotech.com

23-2, No.388 Gaoxin 2nd Road,Wuhan East Lake Hi-tech Development Zone, Hubei , P.R.C



ELK Biotechnology



Western blot analysis of lysate from 293 cells, using CGREF1 Antibody.



+86-27-59760950

ELKbio@ELKbiotech.com

www.elkbiotech.com

23-2, No.388 Gaoxin 2nd Road,Wuhan East Lake Hi-tech Development Zone, Hubei , P.R.C