



# ALPP/ALPPL2 rabbit pAb

Cat No.:ES4105

For research use only

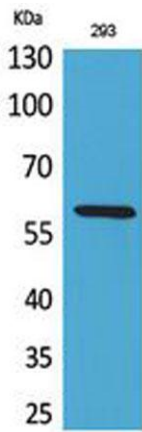
## Overview

<b>Product Name</b>	ALPP/ALPPL2 rabbit pAb
<b>Host species</b>	Rabbit
<b>Applications</b>	WB;ELISA
<b>Species Cross-Reactivity</b>	Human;Mouse
<b>Recommended dilutions</b>	Western Blot: 1/500 - 1/2000. ELISA: 1/20000. Not yet tested in other applications.
<b>Immunogen</b>	The antiserum was produced against synthesized peptide derived from the N-terminal region of human ALPP/ALPPL2. AA range:1-50
<b>Specificity</b>	ALPP/ALPPL2 Polyclonal Antibody detects endogenous levels of ALPP/ALPPL2 protein.
<b>Formulation</b>	Liquid in PBS containing 50% glycerol, 0.5% BSA and 0.02% sodium azide.
<b>Storage</b>	Store at -20°C. Avoid repeated freeze-thaw cycles.
<b>Protein Name</b>	Alkaline phosphatase, placental type/Alkaline phosphatase, placental-like
<b>Gene Name</b>	ALPP/ALPPL2
<b>Cellular localization</b>	Cell membrane; Lipid-anchor, GPI-anchor .
<b>Purification</b>	The antibody was affinity-purified from rabbit antiserum by affinity-chromatography using epitope-specific immunogen.
<b>Clonality</b>	Polyclonal
<b>Concentration</b>	1 mg/ml
<b>Observed band</b>	60kD
<b>Human Gene ID</b>	250/251
<b>Human Swiss-Prot Number</b>	P05187/P10696
<b>Alternative Names</b>	ALPP; PLAP; Alkaline phosphatase, placental type; Alkaline phosphatase Regan isozyme; Placental alkaline phosphatase 1; PLAP-1; ALPPL2; ALPPL; Alkaline phosphatase, placental-likeALP-1; Alkaline phosphatase Nagao isozyme; Germ cell alkaline phosphatase; G
<b>Background</b>	The protein encoded by this gene is an alkaline

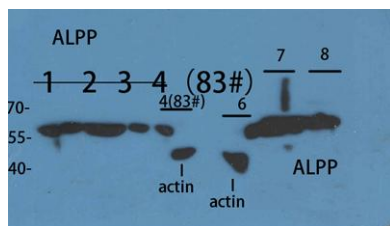




phosphatase, a metalloenzyme that catalyzes the hydrolysis of phosphoric acid monoesters. It belongs to a multigene family composed of four alkaline phosphatase isoenzymes. The enzyme functions as a homodimer and has a catalytic site containing one magnesium and two zinc ions, which are required for its enzymatic function. The protein is primarily expressed in placental and endometrial tissue; however, strong ectopic expression has been detected in ovarian adenocarcinoma, serous cystadenocarcinoma, and other ovarian cancer cells. [provided by RefSeq, Jan 2015],



Western Blot analysis of 293 cells using ALPP/ALPPL2 Polyclonal Antibody. Antibody was diluted at 1:2000. Secondary antibody(catalog#:RS0002) was diluted at 1:20000



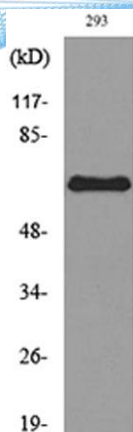
Western Blot analysis of customer's sample using ALPP/ALPPL2 Polyclonal Antibody. Antibody was diluted at 1:2000. Secondary antibody(catalog#:RS0002) was diluted at 1:20000

1 2 3 4 customer's cell  
6 293T  
7 HeLa  
8 K562





**ELK Biotechnology**



Western blot analysis of lysate from 293 cells, using ALPP/ALPPL2 Antibody.



+86-27-59760950

[ELKbio@ELKbiotech.com](mailto:ELKbio@ELKbiotech.com)

[www.elkbiotech.com](http://www.elkbiotech.com)

23-2, No.388 Gaoxin 2nd Road,Wuhan East Lake Hi-tech Development Zone, Hubei , P.R.C