

# SCCA1/2 rabbit pAb

Cat No.:ES4040

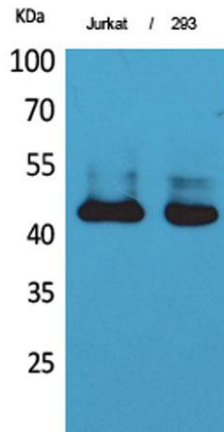
For research use only

## Overview

Product Name	SCCA1/2 rabbit pAb
Host species	Rabbit
Applications	WB;IHC;IF;ELISA
Species Cross-Reactivity	Human;Rat;Mouse;
Recommended dilutions	Western Blot: 1/500 - 1/2000. IHC-p: 1/100-1/300. ELISA: 1/20000. Not yet tested in other applications.
Immunogen	The antiserum was produced against synthesized peptide derived from the Internal region of human SERPINB3/4. AA range:111-160
Specificity	SCCA1/2 Polyclonal Antibody detects endogenous levels of SCCA1/2 protein.
Formulation	Liquid in PBS containing 50% glycerol, 0.5% BSA and 0.02% sodium azide.
Storage	Store at -20°C. Avoid repeated freeze-thaw cycles.
Protein Name	Serpin B3/Serpin B4
Gene Name	SERPINB3/SERPINB4
Cellular localization	Cytoplasm . Seems to also be secreted in plasma by cancerous cells but at a low level.
Purification	The antibody was affinity-purified from rabbit antiserum by affinity-chromatography using epitope-specific immunogen.
Clonality	Polyclonal
Concentration	1 mg/ml
Observed band	45kD
Human Gene ID	6317
Human Swiss-Prot Number	P29508
Alternative Names	SERPINB3; SCCA; SCCA1; Serpin B3; Protein T4-A; Squamous cell carcinoma antigen 1; SCCA-1
Background	developmental stage:Its expression is closely related to cellular differentiation in both normal and malignant squamous cells.,function:May act as a protease inhibitor to modulate the host immune response against tumor cells.,similarity:Belongs to

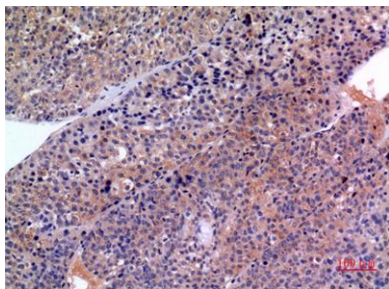


the serpin family.,similarity:Belongs to the serpin family. Ov-serpin subfamily.,subcellular location:Seems to also be secreted in plasma by cancerous cells but at a low level.,tissue specificity:Squamous cells. Expressed in some hepatocellular carcinoma (at protein level),

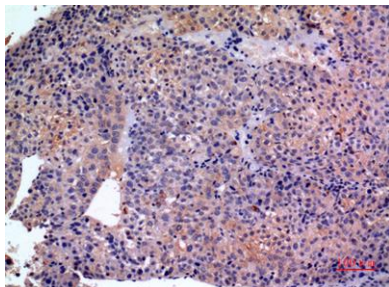


Western Blot analysis of Jurkat, 293 cells using SCCA1/2 Polyclonal Antibody. Secondary antibody(catalog#:RS0002) was diluted at 1:20000

Immunohistochemical analysis of paraffin-embedded human-liver-cancer, antibody was diluted at 1:100



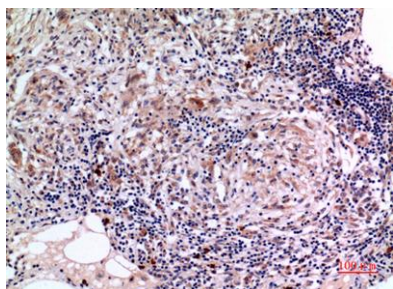
Immunohistochemical analysis of paraffin-embedded human-liver-cancer, antibody was diluted at 1:100





**ELK Biotechnology**

Immunohistochemical analysis of paraffin-embedded human-lung, antibody was diluted at 1:100



+86-27-59760950

[ELKbio@ELKbiotech.com](mailto:ELKbio@ELKbiotech.com)

[www.elkbiotech.com](http://www.elkbiotech.com)

23-2, No.388 Gaoxin 2nd Road, Wuhan East Lake Hi-tech Development Zone, Hubei, P.R.C.