



# CMTM6 rabbit pAb

Cat No.:ES4038

For research use only

## Overview

<b>Product Name</b>	CMTM6 rabbit pAb
<b>Host species</b>	Rabbit
<b>Applications</b>	WB;IHC;IF;ELISA
<b>Species Cross-Reactivity</b>	Human;Rat;Mouse;
<b>Recommended dilutions</b>	Western Blot: 1/500 - 1/2000. IHC-p: 1/100-1/300. ELISA: 1/20000. Not yet tested in other applications.
<b>Immunogen</b>	The antiserum was produced against synthesized peptide derived from the C-terminal region of human CMTM6. AA range:131-180
<b>Specificity</b>	CMTM6 Polyclonal Antibody detects endogenous levels of CMTM6 protein.
<b>Formulation</b>	Liquid in PBS containing 50% glycerol, 0.5% BSA and 0.02% sodium azide.
<b>Storage</b>	Store at -20°C. Avoid repeated freeze-thaw cycles.
<b>Protein Name</b>	CKLF-like MARVEL transmembrane domain-containing protein 6
<b>Gene Name</b>	CMTM6
<b>Cellular localization</b>	Cell membrane ; Multi-pass membrane protein . Early endosome membrane ; Multi-pass membrane protein . Recycling endosome membrane ; Multi-pass membrane protein . Co-localizes with PD-L1/CD274 in the plasma membrane and in recycling endosomes. .
<b>Purification</b>	The antibody was affinity-purified from rabbit antiserum by affinity-chromatography using epitope-specific immunogen.
<b>Clonality</b>	Polyclonal
<b>Concentration</b>	1 mg/ml
<b>Observed band</b>	20kD
<b>Human Gene ID</b>	54918
<b>Human Swiss-Prot Number</b>	Q9NX76
<b>Alternative Names</b>	CMTM6; CKLFSF6; CKLF-like MARVEL transmembrane domain-containing protein 6;

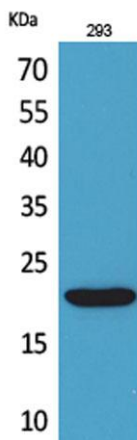




## Background

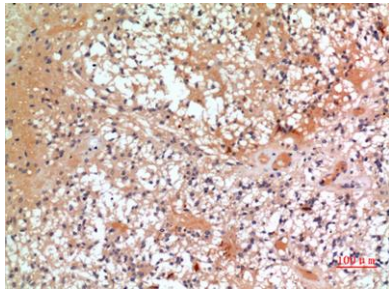
### Chemokine-like factor superfamily member 6

This gene belongs to the chemokine-like factor gene superfamily, a novel family that is similar to the chemokine and transmembrane 4 superfamilies. This gene is one of several chemokine-like factor genes located in a cluster on chromosome 3. This gene is widely expressed in many tissues, but the exact function of the encoded protein is unknown. [provided by RefSeq, Jul 2008],

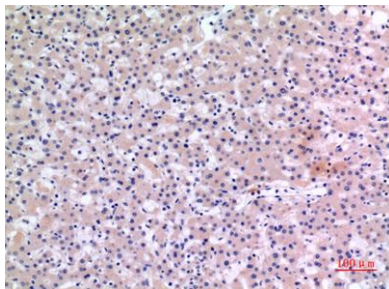


Western Blot analysis of 293 cells using CMTM6 Polyclonal Antibody. Secondary antibody(catalog#:RS0002) was diluted at 1:20000

Immunohistochemical analysis of paraffin-embedded human-oophoroma, antibody was diluted at 1:100



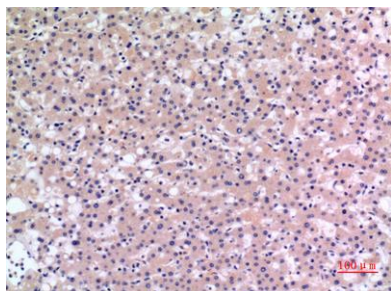
Immunohistochemical analysis of paraffin-embedded human-liver, antibody was diluted at 1:100





**ELK Biotechnology**

Immunohistochemical analysis of paraffin-embedded human-liver, antibody was diluted at 1:100



+86-27-59760950

[ELKbio@ELKbiotech.com](mailto:ELKbio@ELKbiotech.com)

[www.elkbiotech.com](http://www.elkbiotech.com)

23-2, No.388 Gaoxin 2nd Road,Wuhan East Lake Hi-tech Development Zone, Hubei , P.R.C