



# IFN- $\epsilon$ rabbit pAb

Cat No.:ES4034

For research use only

## Overview

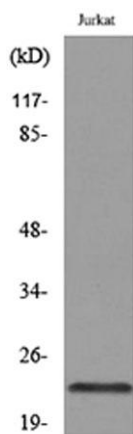
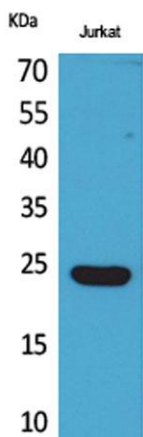
<b>Product Name</b>	IFN- $\epsilon$ rabbit pAb
<b>Host species</b>	Rabbit
<b>Applications</b>	WB;ELISA
<b>Species Cross-Reactivity</b>	Human;Rat;Mouse;
<b>Recommended dilutions</b>	Western Blot: 1/500 - 1/2000. ELISA: 1/20000. Not yet tested in other applications.
<b>Immunogen</b>	The antiserum was produced against synthesized peptide derived from the C-terminal region of human IFNE. AA range:159-208
<b>Specificity</b>	IFN- $\epsilon$ Polyclonal Antibody detects endogenous levels of IFN- $\epsilon$ protein.
<b>Formulation</b>	Liquid in PBS containing 50% glycerol, 0.5% BSA and 0.02% sodium azide.
<b>Storage</b>	Store at -20°C. Avoid repeated freeze-thaw cycles.
<b>Protein Name</b>	Interferon epsilon
<b>Gene Name</b>	IFNE
<b>Cellular localization</b>	Secreted .
<b>Purification</b>	The antibody was affinity-purified from rabbit antiserum by affinity-chromatography using epitope-specific immunogen.
<b>Clonality</b>	Polyclonal
<b>Concentration</b>	1 mg/ml
<b>Observed band</b>	24kD
<b>Human Gene ID</b>	338376
<b>Human Swiss-Prot Number</b>	Q86WN2
<b>Alternative Names</b>	IFNE; IFNE1; Interferon epsilon; IFN-epsilon; Interferon epsilon-1
<b>Background</b>	similarity:Belongs to the alpha/beta interferon family.,tissue specificity:Expressed in prostate cancer cell line PC-3, amnion-derived WISH cells, SK-MEL28 melanoma cells and Daudi cells and very weakly in MCF-7 human breast cancer cells. Not detected in Namalwa cells (Burkitt's lymphoma) or





in Jurkat (T) cells.,

Western Blot analysis of Jurkat cells using IFN- $\epsilon$  Polyclonal Antibody. Secondary antibody(catalog#:RS0002) was diluted at 1:20000



Western blot analysis of lysate from Jurkat cells, using IFNE Antibody.

