



# Osteoglycin rabbit pAb

Cat No.:ES4024

For research use only

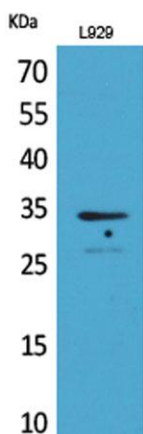
## Overview

<b>Product Name</b>	Osteoglycin rabbit pAb
<b>Host species</b>	Rabbit
<b>Applications</b>	WB;ELISA
<b>Species Cross-Reactivity</b>	Human;Mouse
<b>Recommended dilutions</b>	Western Blot: 1/500 - 1/2000. ELISA: 1/20000. Not yet tested in other applications.
<b>Immunogen</b>	The antiserum was produced against synthesized peptide derived from the C-terminal region of human OGN. AA range:231-280
<b>Specificity</b>	Osteoglycin Polyclonal Antibody detects endogenous levels of Osteoglycin protein.
<b>Formulation</b>	Liquid in PBS containing 50% glycerol, 0.5% BSA and 0.02% sodium azide.
<b>Storage</b>	Store at -20°C. Avoid repeated freeze-thaw cycles.
<b>Protein Name</b>	Mimecan
<b>Gene Name</b>	OGN
<b>Cellular localization</b>	Secreted, extracellular space, extracellular matrix .
<b>Purification</b>	The antibody was affinity-purified from rabbit antiserum by affinity-chromatography using epitope-specific immunogen.
<b>Clonality</b>	Polyclonal
<b>Concentration</b>	1 mg/ml
<b>Observed band</b>	35kD
<b>Human Gene ID</b>	4969
<b>Human Swiss-Prot Number</b>	P20774
<b>Alternative Names</b>	OGN; OIF; SLRR3A; Mimecan; Osteoglycin; Osteoinductive factor; OIF
<b>Background</b>	This gene encodes a member of the small leucine-rich proteoglycan (SLRP) family of proteins. The encoded protein induces ectopic bone formation in conjunction with transforming growth factor beta and may regulate osteoblast differentiation. High expression of the encoded

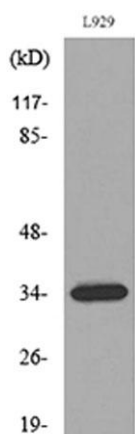




protein may be associated with elevated heart left ventricular mass. Alternative splicing results in multiple transcript variants. [provided by RefSeq, Jan 2016],



Western Blot analysis of L929 cells using Osteoglycin Polyclonal Antibody. Secondary antibody (catalog#:RS0002) was diluted at 1:20000



Western blot analysis of lysate from L929 cells, using OGN Antibody.

