



CD207 rabbit pAb

Cat No.:ES4005

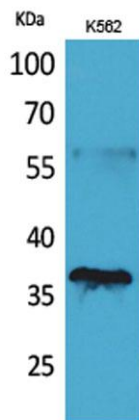
For research use only

Overview

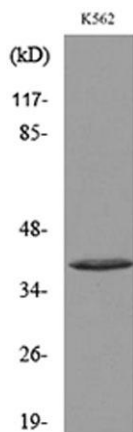
Product Name	CD207 rabbit pAb
Host species	Rabbit
Applications	WB;ELISA
Species Cross-Reactivity	Human;Rat;Mouse;
Recommended dilutions	Western Blot: 1/500 - 1/2000. ELISA: 1/20000. Not yet tested in other applications.
Immunogen	The antiserum was produced against synthesized peptide derived from the Internal region of human CD207. AA range:61-110
Specificity	CD207 Polyclonal Antibody detects endogenous levels of CD207 protein.
Formulation	Liquid in PBS containing 50% glycerol, 0.5% BSA and 0.02% sodium azide.
Storage	Store at -20°C. Avoid repeated freeze-thaw cycles.
Protein Name	C-type lectin domain family 4 member K
Gene Name	CD207
Cellular localization	Membrane ; Single-pass type II membrane protein . Found in Birbeck granules (BGs), which are organelles consisting of superimposed and zippered membranes.
Purification	The antibody was affinity-purified from rabbit antiserum by affinity-chromatography using epitope-specific immunogen.
Clonality	Polyclonal
Concentration	1 mg/ml
Observed band	38kD
Human Gene ID	50489
Human Swiss-Prot Number	Q9UJ71
Alternative Names	CD207; CLEC4K; C-type lectin domain family 4 member K; Langerin; CD207
Background	The protein encoded by this gene is expressed only in Langerhans cells which are immature dendritic cells of the epidermis and mucosa. It is localized in



the Birbeck granules, organelles present in the cytoplasm of Langerhans cells and consisting of superimposed and zippered membranes. It is a C-type lectin with mannose binding specificity, and it has been proposed that mannose binding by this protein leads to internalization of antigen into Birbeck granules and providing access to a nonclassical antigen-processing pathway. Mutations in this gene result in Birbeck granules deficiency or loss of sugar binding activity. [provided by RefSeq, Aug 2010],



Western Blot analysis of K562 cells using CD207 Polyclonal Antibody. Secondary antibody(catalog#:RS0002) was diluted at 1:20000



Western blot analysis of lysate from K562 cells, using CD207 Antibody.