



Nucleophosmin rabbit pAb

Cat No.:ES2991

For research use only

Overview

Product Name	Nucleophosmin rabbit pAb
Host species	Rabbit
Applications	WB;IHC;IF;ELISA
Species Cross-Reactivity	Human;Mouse;Rat;Monkey
Recommended dilutions	Western Blot: 1/500 - 1/2000. Immunohistochemistry: 1/100 - 1/300. ELISA: 1/10000. Not yet tested in other applications.
Immunogen	The antiserum was produced against synthesized peptide derived from human NPM. AA range:1-50
Specificity	Nucleophosmin Polyclonal Antibody detects endogenous levels of Nucleophosmin protein.
Formulation	Liquid in PBS containing 50% glycerol, 0.5% BSA and 0.02% sodium azide.
Storage	Store at -20°C. Avoid repeated freeze-thaw cycles.
Protein Name	Nucleophosmin
Gene Name	NPM1
Cellular localization	Nucleus, nucleolus . Nucleus, nucleoplasm . Cytoplasm, cytoskeleton, microtubule organizing center, centrosome . Generally nucleolar, but is translocated to the nucleoplasm in case of serum starvation or treatment with anticancer drugs. Has been found in the cytoplasm in patients with primary acute myelogenous leukemia (AML), but not with secondary AML. Can shuttle between cytoplasm and nucleus. Co- localizes with the methylated form of RPS10 in the granular component (GC) region of the nucleolus. Colocalized with nucleolin and APEX1 in nucleoli. Isoform 1 of NEK2 is required for its localization to the centrosome during mitosis.
Purification	The antibody was affinity-purified from rabbit antiserum by affinity-chromatography using epitope-specific immunogen.





Clonality

Polyclonal

Concentration

1 mg/ml

Observed band

37kD

Human Gene ID

4869

Human Swiss-Prot Number

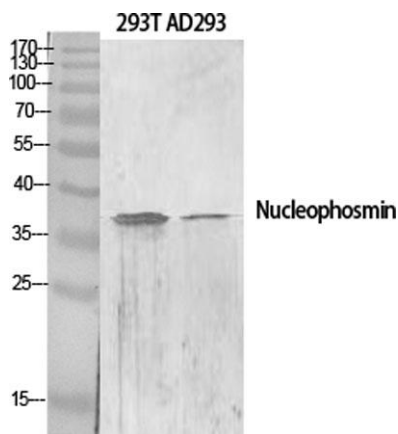
P06748

Alternative Names

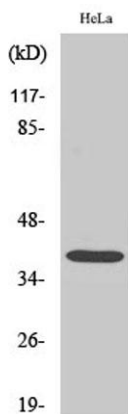
NPM1; NPM; Nucleophosmin; NPM; Nucleolar phosphoprotein B23; Nucleolar protein NO38; Numatrin

Background

This gene encodes a phosphoprotein which moves between the nucleus and the cytoplasm. The gene product is thought to be involved in several processes including regulation of the ARF/p53 pathway. A number of genes are fusion partners have been characterized, in particular the anaplastic lymphoma kinase gene on chromosome 2. Mutations in this gene are associated with acute myeloid leukemia. More than a dozen pseudogenes of this gene have been identified. Alternative splicing results in multiple transcript variants.[provided by RefSeq, Nov 2009],



Western Blot analysis of various cells using Nucleophosmin Polyclonal Antibody diluted at 1:2000

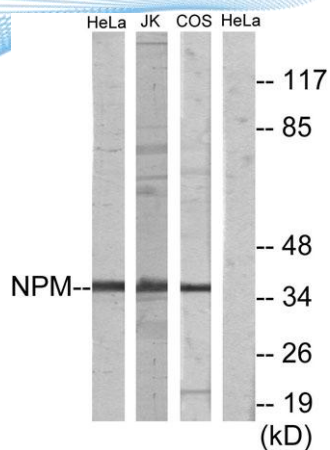


Western Blot analysis of COS7 cells using Nucleophosmin Polyclonal Antibody diluted at 1:2000

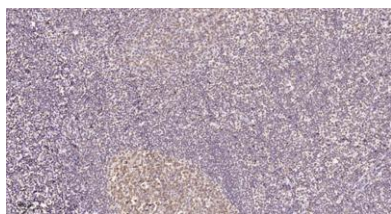




ELK Biotechnology



Western blot analysis of lysates from HeLa, Jurkat, and COS7 cells, using NPM Antibody. The lane on the right is blocked with the synthesized peptide.



Immunohistochemical analysis of paraffin-embedded human tonsil. 1, Tris-EDTA, pH 9.0 was used for antigen retrieval. 2 Antibody was diluted at 1:200 (4°C overnight). 3, Secondary antibody was diluted at 1:200 (room temperature, 45 min).



+86-27-59760950

ELKbio@ELKbiotech.com

www.elkbiotech.com

23-2, No.388 Gaoxin 2nd Road, Wuhan East Lake Hi-tech Development Zone, Hubei, P.R.C