



NKp46 rabbit pAb

Cat No.:ES2965

For research use only

Overview

Product Name	NKp46 rabbit pAb
Host species	Rabbit
Applications	WB;ELISA
Species	Human;Rat;Mouse;
Cross-Reactivity	
Recommended dilutions	Western Blot: 1/500 - 1/2000. ELISA: 1/10000. Not yet tested in other applications.
Immunogen	The antiserum was produced against synthesized peptide derived from human NCR1. AA range:145-194
Specificity	NKp46 Polyclonal Antibody detects endogenous levels of NKp46 protein.
Formulation	Liquid in PBS containing 50% glycerol, 0.5% BSA and 0.02% sodium azide.
Storage	Store at -20°C. Avoid repeated freeze-thaw cycles.
Protein Name	Natural cytotoxicity triggering receptor 1
Gene Name	NCR1
Cellular localization	Cell membrane ; Single-pass type I membrane protein .
Purification	The antibody was affinity-purified from rabbit antiserum by affinity-chromatography using epitope-specific immunogen.
Clonality	Polyclonal
Concentration	1 mg/ml
Observed band	40kD
Human Gene ID	9437
Human	O76036
Swiss-Prot Number	
Alternative Names	NCR1; LY94; Natural cytotoxicity triggering receptor 1; Lymphocyte antigen 94 homolog; NK cell-activating receptor; Natural killer cell p46-related protein; NK-p46; NKp46; hNKp46; CD antigen CD335
Background	function:Cytotoxicity-activating receptor that may contribute to the increased efficiency of activated natural killer (NK) cells to





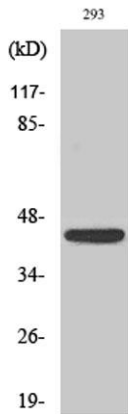
mediate tumor cell

lysis.,PTM:N-glycosylated.,PTM:O-glycosylated.,similarity:Belongs to the natural cytotoxicity receptor (NCR)

family.,similarity:Contains 2 Ig-like (immunoglobulin-like)

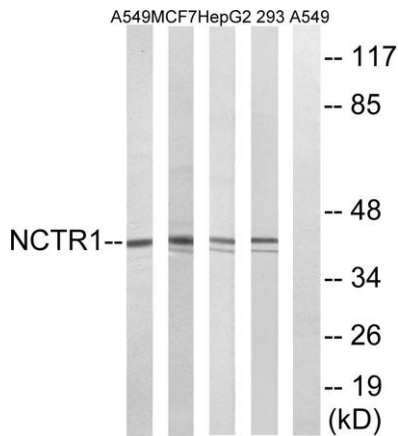
domains.,subunit:Interacts with CD3Z and FCER1G.,tissue

specificity:Selectively expressed by both resting and activated NK cells.,



Western Blot analysis of various cells using NKp46

Polyclonal Antibody cells nucleus extracted by Minute TM Cytoplasmic and Nuclear Fractionation kit (SC-003, Inventbiotech, MN, USA).



Western blot analysis of lysates from 293, HepG2, MCF-7, and A549 cells, using NCR1 Antibody. The lane on the right is blocked with the synthesized peptide.

