



NHE-9 rabbit pAb

Cat No.:ES2961

For research use only

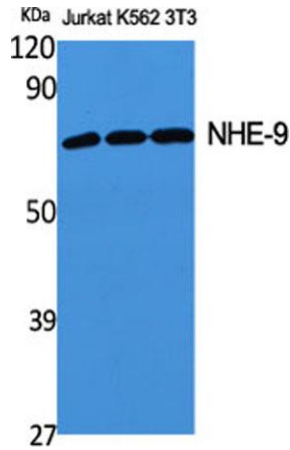
Overview

Product Name	NHE-9 rabbit pAb
Host species	Rabbit
Applications	WB;ELISA
Species Cross-Reactivity	Human;Mouse
Recommended dilutions	Western Blot: 1/500 - 1/2000. ELISA: 1/40000. Not yet tested in other applications.
Immunogen	The antiserum was produced against synthesized peptide derived from human SLC9A9. AA range:171-220
Specificity	NHE-9 Polyclonal Antibody detects endogenous levels of NHE-9 protein.
Formulation	Liquid in PBS containing 50% glycerol, 0.5% BSA and 0.02% sodium azide.
Storage	Store at -20°C. Avoid repeated freeze-thaw cycles.
Protein Name	Sodium/hydrogen exchanger 9
Gene Name	SLC9A9
Cellular localization	Late endosome membrane ; Multi-pass membrane protein .
Purification	The antibody was affinity-purified from rabbit antiserum by affinity-chromatography using epitope-specific immunogen.
Clonality	Polyclonal
Concentration	1 mg/ml
Observed band	65kD
Human Gene ID	285195
Human Swiss-Prot Number	Q8IVB4
Alternative Names	SLC9A9; NHE9; Nbla00118; Sodium/hydrogen exchanger 9; Na(+)/H(+) exchanger 9; NHE-9; Solute carrier family 9 member 9
Background	This gene encodes a sodium/proton exchanger that is a member of the solute carrier 9 protein family. The encoded protein localizes to the late recycling endosomes and may play an important

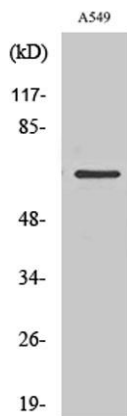




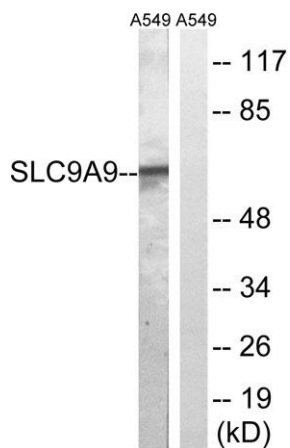
role in maintaining cation homeostasis. Mutations in this gene are associated with autism susceptibility 16 and attention-deficit/hyperactivity disorder. [provided by RefSeq, Mar 2012],



Western Blot analysis of various cells using NHE-9 Polyclonal Antibody



Western Blot analysis of RAW264.7 cells using NHE-9 Polyclonal Antibody



Western blot analysis of lysates from A549 cells, using SLC9A9 Antibody. The lane on the right is blocked with the synthesized peptide.

