



Neurexophilin-4 rabbit pAb

Cat No.:ES2928

For research use only

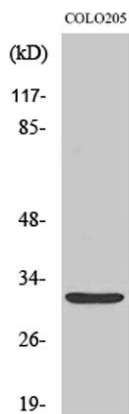
Overview

Product Name	Neurexophilin-4 rabbit pAb
Host species	Rabbit
Applications	WB;IHC;IF;ELISA
Species Cross-Reactivity	Human;Rat
Recommended dilutions	Western Blot: 1/500 - 1/2000. Immunohistochemistry: 1/100 - 1/300. ELISA: 1/40000. Not yet tested in other applications.
Immunogen	The antiserum was produced against synthesized peptide derived from human NXPH4. AA range:216-265
Specificity	Neurexophilin-4 Polyclonal Antibody detects endogenous levels of Neurexophilin-4 protein.
Formulation	Liquid in PBS containing 50% glycerol, 0.5% BSA and 0.02% sodium azide.
Storage	Store at -20°C. Avoid repeated freeze-thaw cycles.
Protein Name	Neurexophilin-4
Gene Name	NXPH4
Cellular localization	Secreted .
Purification	The antibody was affinity-purified from rabbit antiserum by affinity-chromatography using epitope-specific immunogen.
Clonality	Polyclonal
Concentration	1 mg/ml
Observed band	33kD
Human Gene ID	11247
Human Swiss-Prot Number	O95158
Alternative Names	NXPH4; NPH4; Neurexophilin-4
Background	function:May be signaling molecules that resemble neuropeptides and that act by binding to alpha-neurexins and possibly other receptors .,PTM:May be proteolytically processed at the boundary between the N-terminal non-conserved and the central conserved domain in



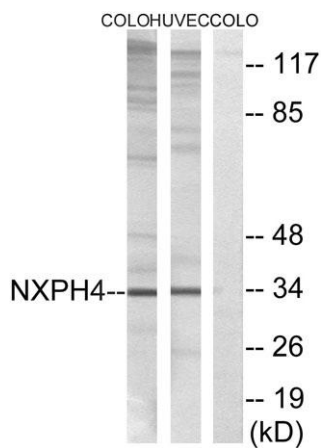
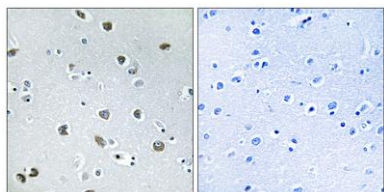


neuron-like cells.,similarity:Belongs to the neurexophilin family.,tissue specificity:Expressed in brain, spleen, and testis.,



Western Blot analysis of various cells using Neurexophilin-4 Polyclonal Antibody

Immunohistochemistry analysis of paraffin-embedded human brain tissue, using NXPH4 Antibody. The picture on the right is blocked with the synthesized peptide.



Western blot analysis of lysates from COLO and HUVEC cells, using NXPH4 Antibody. The lane on the right is blocked with the synthesized peptide.

