



Neurensin-1 rabbit pAb

Cat No.:ES2926

For research use only

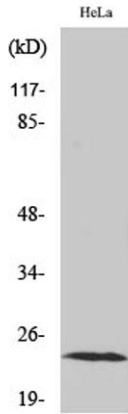
Overview

Product Name	Neurensin-1 rabbit pAb
Host species	Rabbit
Applications	WB;IHC;IF;ELISA
Species Cross-Reactivity	Human;Mouse;Rat
Recommended dilutions	Western Blot: 1/500 - 1/2000. Immunohistochemistry: 1/100 - 1/300. ELISA: 1/40000. Not yet tested in other applications.
Immunogen	The antiserum was produced against synthesized peptide derived from human NRSN1. AA range:121-170
Specificity	Neurensin-1 Polyclonal Antibody detects endogenous levels of Neurensin-1 protein.
Formulation	Liquid in PBS containing 50% glycerol, 0.5% BSA and 0.02% sodium azide.
Storage	Store at -20°C. Avoid repeated freeze-thaw cycles.
Protein Name	Neurensin-1
Gene Name	NRSN1
Cellular localization	Membrane ; Multi-pass membrane protein . Cell projection, neuron projection .
Purification	The antibody was affinity-purified from rabbit antiserum by affinity-chromatography using epitope-specific immunogen.
Clonality	Polyclonal
Concentration	1 mg/ml
Observed band	25kD
Human Gene ID	140767
Human Swiss-Prot Number	Q8IZ57
Alternative Names	NRSN1; VMP; Neurensin-1; Neuro-p24; Vesicular membrane protein of 24 kDa; Vesicular membrane protein p24
Background	function:May play an important role in neural organelle transport, and in transduction of nerve signals or in nerve growth. May play a role in neurite

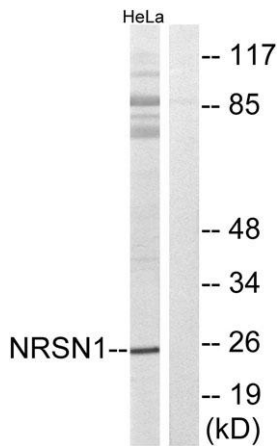




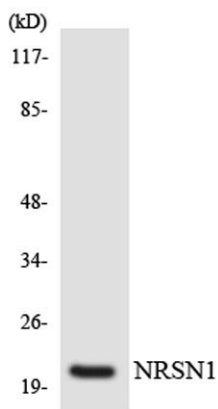
extension.,similarity:Belongs to the VMP family.,subcellular location:Localizes mainly to neurites.,tissue specificity:Expressed in brain. Not detectable in other tissues tested.,



Western Blot analysis of various cells using Neurensin-1 Polyclonal Antibody



Western blot analysis of lysates from HeLa cells, using NRSN1 Antibody. The lane on the right is blocked with the synthesized peptide.



Western blot analysis of the lysates from 293 cells using NRSN1 antibody.

