



# Neuralized-2 rabbit pAb

Cat No.:ES2925

For research use only

## Overview

<b>Product Name</b>	Neuralized-2 rabbit pAb
<b>Host species</b>	Rabbit
<b>Applications</b>	WB;IHC;IF;ELISA
<b>Species Cross-Reactivity</b>	Human;Mouse
<b>Recommended dilutions</b>	Western Blot: 1/500 - 1/2000. Immunohistochemistry: 1/100 - 1/300. ELISA: 1/40000. Not yet tested in other applications.
<b>Immunogen</b>	The antiserum was produced against synthesized peptide derived from human NEURL2. AA range:99-148
<b>Specificity</b>	Neuralized-2 Polyclonal Antibody detects endogenous levels of Neuralized-2 protein.
<b>Formulation</b>	Liquid in PBS containing 50% glycerol, 0.5% BSA and 0.02% sodium azide.
<b>Storage</b>	Store at -20°C. Avoid repeated freeze-thaw cycles.
<b>Protein Name</b>	Neuralized-like protein 2
<b>Gene Name</b>	NEURL2
<b>Cellular localization</b>	Cytoplasm .
<b>Purification</b>	The antibody was affinity-purified from rabbit antiserum by affinity-chromatography using epitope-specific immunogen.
<b>Clonality</b>	Polyclonal
<b>Concentration</b>	1 mg/ml
<b>Observed band</b>	36kD
<b>Human Gene ID</b>	140825
<b>Human Swiss-Prot Number</b>	Q9BR09
<b>Alternative Names</b>	NEURL2; C20orf163; Neuralized-like protein 2
<b>Background</b>	This gene encodes a protein that is involved in the regulation of myofibril organization. This protein is likely the adaptor component of the E3 ubiquitin ligase complex in striated muscle, and it regulates the ubiquitin-mediated degradation of beta-catenin during myogenesis. Alternative splicing of this gene



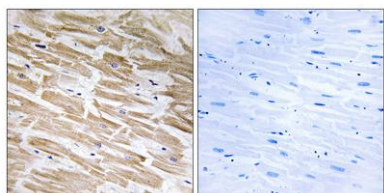


results in multiple transcript variants. [provided by RefSeq, Jun 2013],

Western Blot analysis of various cells using Neuralized-2 Polyclonal Antibody



Immunohistochemistry analysis of paraffin-embedded human heart tissue, using NEURL2 Antibody. The picture on the right is blocked with the synthesized peptide.



Western blot analysis of lysates from Jurkat, COLO, and K562 cells, using NEURL2 Antibody. The lane on the right is blocked with the synthesized peptide.

